

**FLOW  RIDER®**



# THE ULTIMATE SURF SIMULATOR

## BRING SOME SURFING SOUL TO YOUR VENUE — 4

Hotels & Resorts  
Retail & Hospitality  
Water Parks  
Municipal

## PRODUCT LINEUP — 8

FlowRider® Single  
FlowRider® Double  
FlowRider® Triple  
FlowRider® Wave in a Box Double  
FlowBarrel®  
FlowCurl®  
FlowRider® Edge  
FlowSurf™  
FlowRider® Mobile  
LatiTube™  
WaveOz™

## MARKET LEADER — 20

Why do the best brands choose FlowRider?  
Access to the latest innovations

## SERVICE YOU CAN COUNT ON — 22

Lean on our expertise

## A CULTURE COMMITTED TO SAFETY — 24



# BRING THE SURF LIFESTYLE TO YOUR VENUE

Surfing is undeniably fun and it's also undeniably cool. The sport has given birth to a surfing lifestyle that has become a global trend. Today, with the leaps in technology, you can bring the surf culture right to your doorstep, miles away from the ocean. Create a hip, on-trend venue that will keep visitors coming back for more.

The FlowRider creates hybrid board-sport that combines surfing, skating, wakeboarding, and snowboarding. While not exactly the same as surfing, flowboarding gives guests the epic feeling of riding a wave and is beloved by patrons around the world.

Hundreds of venues choose FlowRider because of the leading technology, innovation, and service we offer. You'll find this versatile sheet wave attraction at water parks, malls, bars, municipalities, hotels, and even on cruise ships. Here's how adding a FlowRider to your venue can help increase revenue, traffic, and your bottom line.

# FLOWRIDER DELIVERS



## FOOD & BEVERAGE SALES

FlowRiders function as anchor attractions around which shops, restaurants, and bars can be placed. This encourages people to hang out and watch riders for hours at a time, and nothing makes people hungrier and thirstier than watching or riding the wave.



## THE TEEN DEMOGRAPHIC

Teens are very opinionated, therefore difficult to attract and retain. If you can accommodate the teen, you can capture the entire family. Luckily, a FlowRider is a teen magnet.



## MARKET DIFFERENTIATION

Differentiate your venue from competitors' with a cool surf machine and give guests an extra reason to visit.



## GUEST LOYALTY

As a sport that takes years of consistent practice to master, flowboarding poses an opportunity for operators to capitalize on repeat customers.



## REVENUE GENERATION

Aside from increased revenue from food and beverage, retail and events, the FlowRider is a proven revenue generator in and of itself through ride ticket sales.



## SPORTS & LEISURE LIFESTYLE

Like skateboarding, surfing and snowboarding, flowboarding has a strong community of riders. They live for the thrill and cool lifestyle that surrounds the FlowRider.



FlowRider® Single (Hyatt Hill Country - San Antonio, USA)



FlowRider® Double (Waterbom Bali - Bali, Indonesia)



If you offer a FlowRider as an amenity, guests will be more inclined to book with you over other properties and they will want to stay on property once they are there! Even hotels and resorts that are located far from the coast can still provide a "beachy" experience to guests by setting up concessions and cabanas near the FlowRider for the ultimate coastal feel.



Build a business that brings the Southern California lifestyle anywhere! It's the ultimate gathering place for friends and family alike - just mix amazing food & beverage, music, fun events, retail and the world-famous FlowRider® surf simulator. The FlowRider attraction is the dynamic centerpiece that not only encourages patrons to linger, but also to return to your business time and time again.



Add a surf attraction to your park with a FlowRider, which can be strategically placed in a high foot traffic area. Bars, restaurants, and shops perfectly complement the FlowRider, driving increased revenue through the sale of food and beverage, souvenirs, and also encourages spectators to stay and linger. Generate income from the sale of FlowRider tickets or rent it out for events and competitions which are incredibly popular with teenagers.



A FlowRider is an excellent solution for aquatic centers that need to increase revenue and gain some serious local interest.

Transform any underutilized area with the addition of a FlowRider and surely all members of the family will show up for some flowboarding sessions!



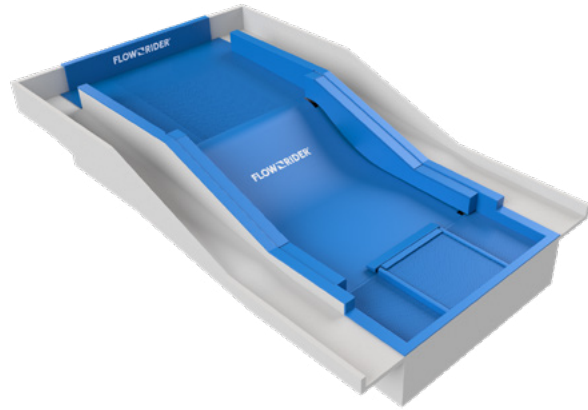


# PRODUCT LINEUP

---

FlowRider has the broadest portfolio in the industry and is constantly innovating to make it as safe and reliable as possible, because these are the factors that you'll depend on every day. From the classic FlowRider Double to the edgy FlowCurl, you'll be itching to jump on a flowboard as you read this.

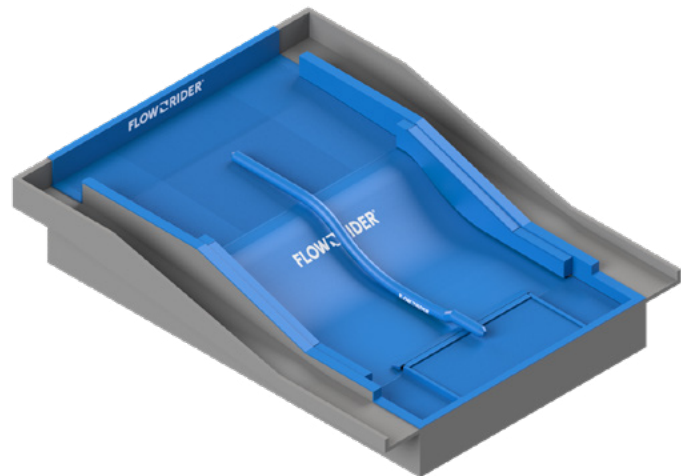
The FlowRider Double is our most popular product to date, and for a good reason. It offers a massive carving surface, or it can be separated into two lanes with the use of an inflatable divider to double ride capacity. For venues without the space for a FlowRider Double, its little sibling, the FlowRider Single, brings the fun in a compact version.



## SINGLE

RIDE SURFACE: TENSIONED\*

DIMENSIONS	TANK VOLUME	OPERATING WEIGHT	POWER REQUIREMENTS
6.7 m x 16.25 m (22 ft x 53 ft)	106,300 L (28,100 Gal)	161,000 kg (355,000 lbs)	180 Amps (90kW/hr) 3 phase



## DOUBLE

RIDE SURFACE: TENSIONED\*

DIMENSIONS	TANK VOLUME	OPERATING WEIGHT	POWER REQUIREMENTS
9.75 m x 16.25 m (32 ft x 53 ft)	160,000 L (42,000 Gal)	176,000 kg (388,000 lbs)	360 Amps (180kW/hr) 3 phase

\*Color options available on tensioned ride surfaces



FlowRider® Single (Solara Resort Clubhouse - Kissimmee, USA)



FlowRider® Triple (Tidal Cove Water Park at JW Marriot Miami Turnberry - Aventura, USA)

## TRIPLE

The FlowRider Triple gives riders an impressive 40-foot wide ride area—10 feet wider than the FlowRider Double. It can be divided into three lanes, allowing three riders to enjoy the ride at the same time, offering a maximum capacity of 720 rides per hour.



RIDE SURFACE: INFLATABLE

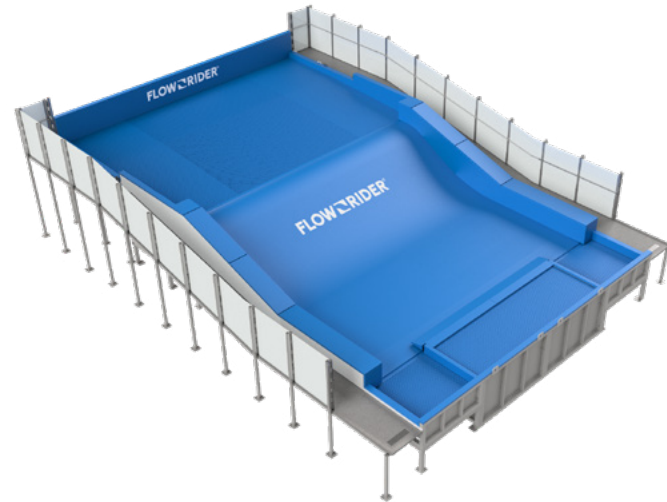
DIMENSIONS	TANK VOLUME	OPERATING WEIGHT	POWER REQUIREMENTS
12.8 m x 16.25 m (42 ft x 53 ft)	212,500 L (56,000 Gal)	232,700 kg (513,000 lbs)	570 Amps (270kW/hr) 3 phase



FlowRider® Double (Epic Waters Indoor Waterpark - Grand Prairie, USA)

# FLOWRIDER® WAVE IN A BOX

The FlowRider Wave in a Box delivers the Southern California lifestyle to any venue while simultaneously adding an element of versatility to any installation site. Unlike the FlowRider Double, this product is a self-contained unit that provides a turnkey solution for venues across all markets, available in Double and Single sizes.



#### RIDE SURFACE: TENSIONED\*

DIMENSIONS	TANK VOLUME	OPERATING WEIGHT	POWER REQUIREMENTS
9.15 m x 15.25 m (30 ft x 50 ft)	60,500 L (16,000 Gal)	94,000 kg (207,200 lbs)	360 Amps (180kW/hr) 3 phase

\*Color options available on tensioned ride surfaces



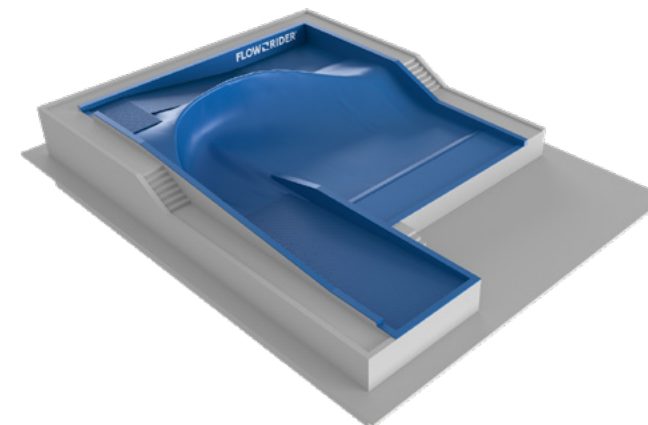
FlowRider® Wave in a Box Double (Cheval Blanc Randheli - Randheli Island, Maldives)



FlowBarrel®

# FLOWBARREL®

The FlowBarrel is a magnet for fun and adventurous people. While it takes skill and practice to learn how to properly ride this wave, it takes minimal effort to be a spectator. The FlowBarrel is a very entertaining centerpiece that spectators can't resist, but is best for experienced riders.



#### RIDE SURFACE: FOAM & VINYL

DIMENSIONS	TANK VOLUME	OPERATING WEIGHT	POWER REQUIREMENTS
15 m x 23 m (49 ft x 76 ft)	454,000 L (120,000 Gal)	507,000 kg (1,100,000 lbs)	1240 Amps (640kW/hr) 3 phase

# FLOWCURL®



The FlowCurl fills the gap between the popular FlowRider series and the more extreme FlowBarrel product line – it is in essence a smaller FlowBarrel with an inflatable surface. There is a steep wave face for airs and a breaking section that allows for more radical maneuvers. It also incorporates a straight flow section which allows the operator to divide the attraction, thus creating an easier space for people to learn before advancing to the curling section.

**RIDE SURFACE: INFLATABLE**

DIMENSIONS	TANK VOLUME	OPERATING WEIGHT	POWER REQUIREMENTS
21.2 m x 15.7 m (70 ft x 51 ft)	315,000 L (83,000 Gal)	350,000 kg (771,617 lbs)	1020 Amps (510kW/hr) 3 phase



FlowCurl® (Baha Mar - Nassau, Bahamas)



FlowCurl® (Baha Mar - Nassau, Bahamas)



FlowRider® Edge (Tampa Bay, USA)

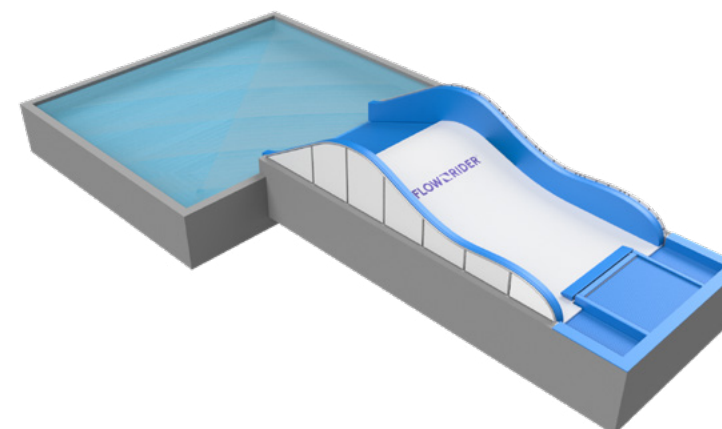


FlowRider® Edge (Tampa Bay, USA)



FlowRider® Edge (Tampa Bay, USA)

# FLOWRIDER® EDGE



The FlowRider Edge operates by connecting a FlowRider to the edge of a swimming pool where it shares the same body of water and filtration system. The tank is designed so it can integrate into an existing pool which in turn reduces site works. The patented inflatable ride surface technology allows the participant to enjoy the ride and when a wipeout occurs, they simply flow over the hump and land in the pool behind the wave. At the push of a button, your backyard or community aquatic center will become the talk of the town.

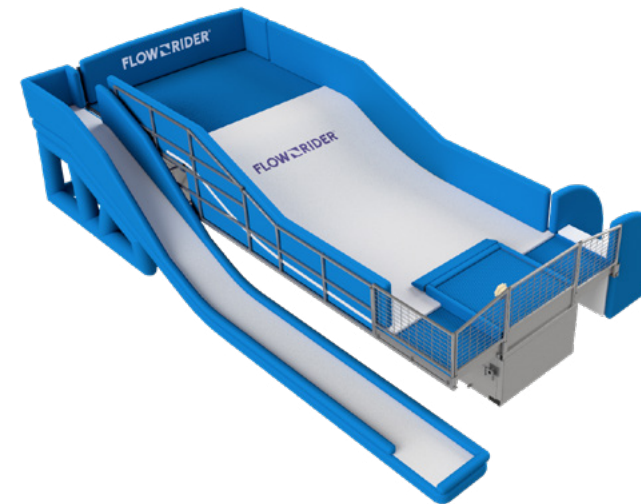
**RIDE SURFACE: INFLATABLE**

DIMENSIONS	TANK DEPTH	POWER REQUIREMENTS
5.48 m x 13.11 m (18 ft x 43 ft)	1.44 m (4.7 ft)	180 Amps (90kW/hr) 3 phase





## FLOWRIDER® MOBILE

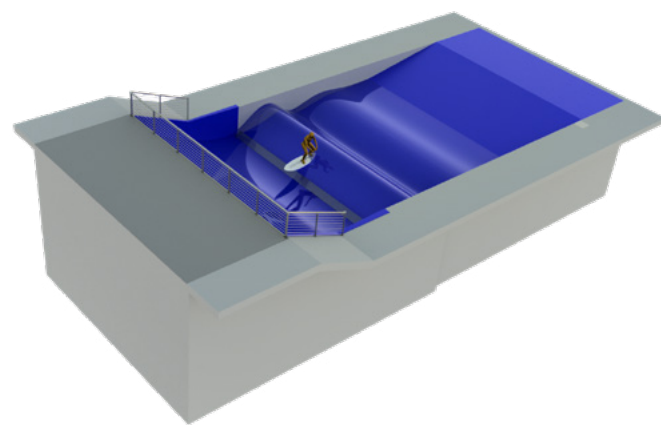


With over 20 years of mobile wave technology under our belts and insanely durable inflatable technology at our fingertips, we are all technologied out! This is the 3rd iteration of our ready-to-roll FlowRider and it is fine tuned to exceed expectations. This dynamic wave travels in its own container and can be set up and broken down in one day. It is hands down the coolest centerpiece for any event whether it's a music festival, corporate event, brand activation or any other crazy idea you have!

### RIDE SURFACE: INFLATABLE

DIMENSIONS	TANK VOLUME	OPERATING WEIGHT	POWER REQUIREMENTS
4.9 m x 13m (16 ft x 42.5 ft)	32,175 L (8,500 Gal)	43,090 kg (95,000 lbs)	180 Apms (90 kW/hr)

## FLAWSURF™



This wave has been in the making for several years with the goal of emulating the famous Waimea River wave. Our focus has been to use our newly patented flow conditioning technology to create a silky-smooth standing wave with the least amount of power. All the while, we have maintained the highest standards of safety, durability, and efficiency.

### RIDE SURFACE: FIBERGLASS

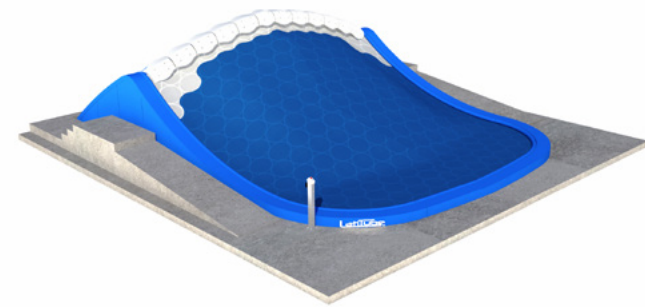
DIMENSIONS	TANK VOLUME	OPERATING WEIGHT	POWER REQUIREMENTS
223 m2 (2,392 ft2)	813,863 L (215,000 Gal)	841,414 kg (1,855,000 lbs)	460v 3 phase (Rated Power 345 kW)

*\*Operational cost is calculated by local electrical costs x kW/hour used*





The LatiTube is a surfing attraction that the whole family can master, with great "getting tubed" photo opportunities built in. This technology includes a radically new way for operators to precisely control water flow so that every guest can be appropriately challenged while experiencing the thrill of surfing. On the LatiTube, guests will be able to stand on their first try because the operator can make the wave easier to ride, making this a great water park product.



## POCKET SINGLE

RIDE SURFACE: MULTI NOZZLE MAT

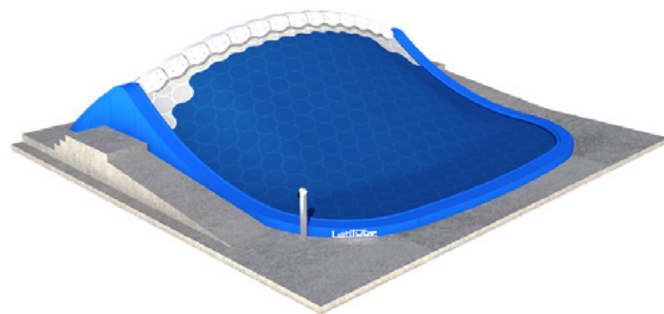
DIMENSIONS	TANK VOLUME	OPERATING WEIGHT	POWER REQUIREMENTS
9.75 m x 11 m (32 ft x 36.1 ft)	65,135 L (17,207 Gal)	9,600 kg (21,264 lbs)	200 Amps (100 kW/hr) 3 phase



## POCKET DOUBLE

RIDE SURFACE: MULTI NOZZLE MAT

DIMENSIONS	TANK VOLUME	OPERATING WEIGHT	POWER REQUIREMENTS
14.4 m x 11 m (47.2 ft x 36.1 ft)	127,585 L (33,704 Gal)	14,000 kg (30,865 lbs)	360 Amps (180 kW/hr) 3 phase



## POCKET SWITCH

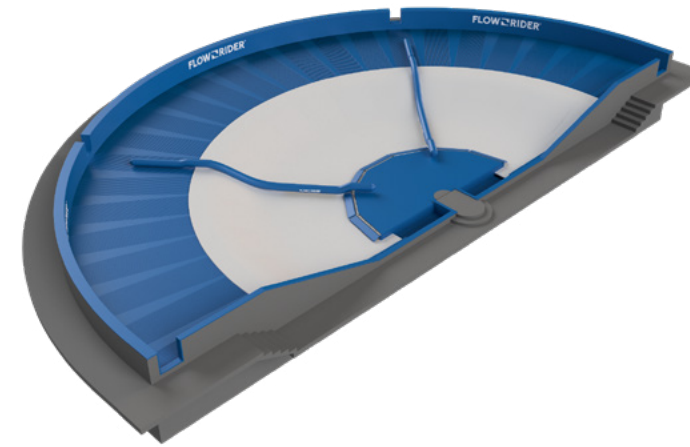
RIDE SURFACE: MULTI NOZZLE MAT

DIMENSIONS	TANK VOLUME	OPERATING WEIGHT	POWER REQUIREMENTS
11.9 m x 11 m (39 ft x 36.1 ft)	94,010 L (24,835 Gal)	11,700 kg (25,794 lbs)	210 Amps (105 kW/hr) 3 phase



The WaveOz features a huge and entirely inflatable ride surface. It is the biggest product that we have, giving riders 57 meters (187 feet) of space along the top of the ride surface to show off their skills and push the limits of bodyboarding and flowboarding.

The sheer linear space on this attraction allows for more speed, more back to back tricks, and an overall enjoyable ride experience. The ride surface can also be divided into multiple sections, offering the industry's highest capacity of up to 960 rides per hour.



RIDE SURFACE: INFLATABLE

DIMENSIONS	TANK VOLUME	OPERATING WEIGHT	POWER REQUIREMENTS
34.85 m x 18.8 m (114 ft x 62 ft)	687,000 L (182,000 Gal)	800,000 kg (1,760,000 lbs)	1365 Amps (630kW/hr) 3 phase



WaveOz™ (Laguna Waterpark - Dubai, UAE)



WaveOz™ (Thermas dos Laranjais - Olimpia, Brazil)



WaveOz™ (Laguna Waterpark - Dubai, UAE)



# MARKET LEADER

## WHY DO THE BEST BRANDS CHOOSE FLOWRIDER®?

We have the world's most popular sheet waves. From our start in 1991, our presence has grown tremendously, with installations in countries from China and Indonesia to Canada and Australia. We are persistently focused on innovation and safety and have managed to create not just the best surf simulators in the world, we've also inspired a cultural movement in the industry.



## ACCESS TO THE LATEST INNOVATIONS

FlowRider has always been the market leader in innovation and creating ever-safer rides thanks to our continuous improvement process. In recent years, we have improved our nozzle caps, surfaces, padding, and pump tube intakes—no complacency here!



# SERVICE YOU CAN COUNT ON

We pride ourselves on the incredible service that we provide to our clients. No matter how long it has been since we installed your FlowRider, you can always count on us for advice, help, and solutions. We have dedicated teams in San Diego, Munich, Shanghai, Dubai, and Vancouver who are ready to assist you in any time zone. We stand by the quality of our products and strive to always provide support with minimal lag time.

We are not simply equipment suppliers, but consultants, too. Our goal is to create a smooth, yet exciting purchasing experience for all clients. If you have questions, we'll be here to answer them and to guide you through all your decision-making processes. We'll help you understand the build process, what permits you may need, kick start your marketing, and how to create a brand for your venue that will keep guests coming back.



## LEAN ON OUR EXPERTISE

*"At FlowRider we provide a fun and straight forward experience. We make sure we understand our clients' wants and needs and then stick with them every step of the way. We defined service in this industry and we will continue to do so. The more waves for your guests, the better!"*

— MARSHALL MYRMAN



# A CULTURE COMMITTED TO SAFETY

While every board sport comes with risk, FlowRider's entire philosophy is based on safety. We run quality control checks on suppliers, and we conduct simulations and rigorous testing—such as G-Force testing on our various patented ride surfaces. We want to not just provide fun wave products, but the safest ones, too.

## TECHNOLOGY

- **Patented Ride Surface:** While we hold many patents, the most advanced ones are for our ride surface. The technology behind them make rides safer, yet ups the thrill level. Our tensioned and inflatable ride surface technologies ensure that guests hopefully enjoy their falls!
- **Multiple-Guest Ride Divider:** Our inflatable ride divider is a soft air-cushioned "fence" that allows you to safely employ two or more riders at a time on the FlowRider Double, FlowRider Triple, and WaveOz™ 180. If a guest runs into the floating divider while riding, it simply absorbs the motion and gently moves out of the way, allowing riders to ease back into the main riding area. This technology is easy to install, extremely safe, and is preferred by riders globally.
- **Nozzle Flaps:** Situated at the front of the ride, these are a revolutionary and integral element. They are operated by a system that immediately closes when the ride turns off. If the ride is shut down while someone is riding, the rider simply glides up over the top, leaving no chance for them to come into contact with the nozzle opening.
- **Patented Max Recovery System:** Years ago, we moved away from hollow-tube vinyl mat and a hard fiber glass base to a proprietary design that allows for soft, durable landings. Hollow tube matting is not as soft and is difficult to fix or replace—time- and financial-wise. If a Max Recovery System bar fails, it can be easily replaced with minimal downtime. FlowRider is the only ride of its kind to employ this technology.



# READY TO MAKE WAVES WITH FLOWRIDER?

We love helping clients create successful venues. Drop us a line at [FlowRider.com](http://FlowRider.com) to share your plans. We'd be delighted to help, just like we have for hundreds of other companies. This is what the FlowRider team lives for!

# FLOWRIDER®

## FLOWRIDER, INC. HEADQUARTERS

3655 Pacific Highway, #A  
San Diego, CA 92101  
+1 619 241 2517

[www.flowrider.com](http://www.flowrider.com)

FlowRider, Inc. is part of the  
WhiteWater family

[www.whitewaterwest.com](http://www.whitewaterwest.com)



HEAD OFFICE (VANCOUVER)  
+1.604.273.1068  
[whitewater@whitewaterwest.com](mailto:whitewater@whitewaterwest.com)  
[www.whitewaterwest.com](http://www.whitewaterwest.com)

ASIA PACIFIC OFFICE (SHANGHAI)  
+86 21 32567586  
[whitewater@whitewaterwest.cn](mailto:whitewater@whitewaterwest.cn)  
[www.whitewaterwest.cn](http://www.whitewaterwest.cn)

MIDDLE EAST OFFICE (DUBAI)  
+971 (0) 4 422 9318

EUROPE OFFICE (MUNICH)  
+49 89 904 2282 30