



WHITEWATER®

Entertain the Possibilities

AquaAdventure





Choose Your Own Water Challenge Adventure

Our latest addition to our Aquatic Play product family, AquaAdventure combines the free exploration of water play with the fun challenges of an adventure course, all without the usually required harness.

Key Highlights

- Ideal for a purpose-built pool with a static water level or a repurposed existing pool that meets specifications
- Caters to multiple age ranges and physical abilities to promote multi-generational play
- Allows children to safely push boundaries and test their mettle for a sense of accomplishment in a non-threatening environment
- High play value with a low staff to guest ratio, high throughput, plus great spectator value



CHALLENGE TRACK

Unique ninja-style suspended and floating features using kid-friendly sizes and fun shapes.

PHYSICAL SPECS:

Balance, brainwork, tricky, full body, easy to difficult, challenging, strength builder



ZIP'N SWING

Part zip and rope swing, this easy to use feature is high throughput and endlessly repeatable. It's self-retracting with a hidden mechanism.

PHYSICAL SPECS:

Courage and confidence, competition, upper body and core, speed, thrill

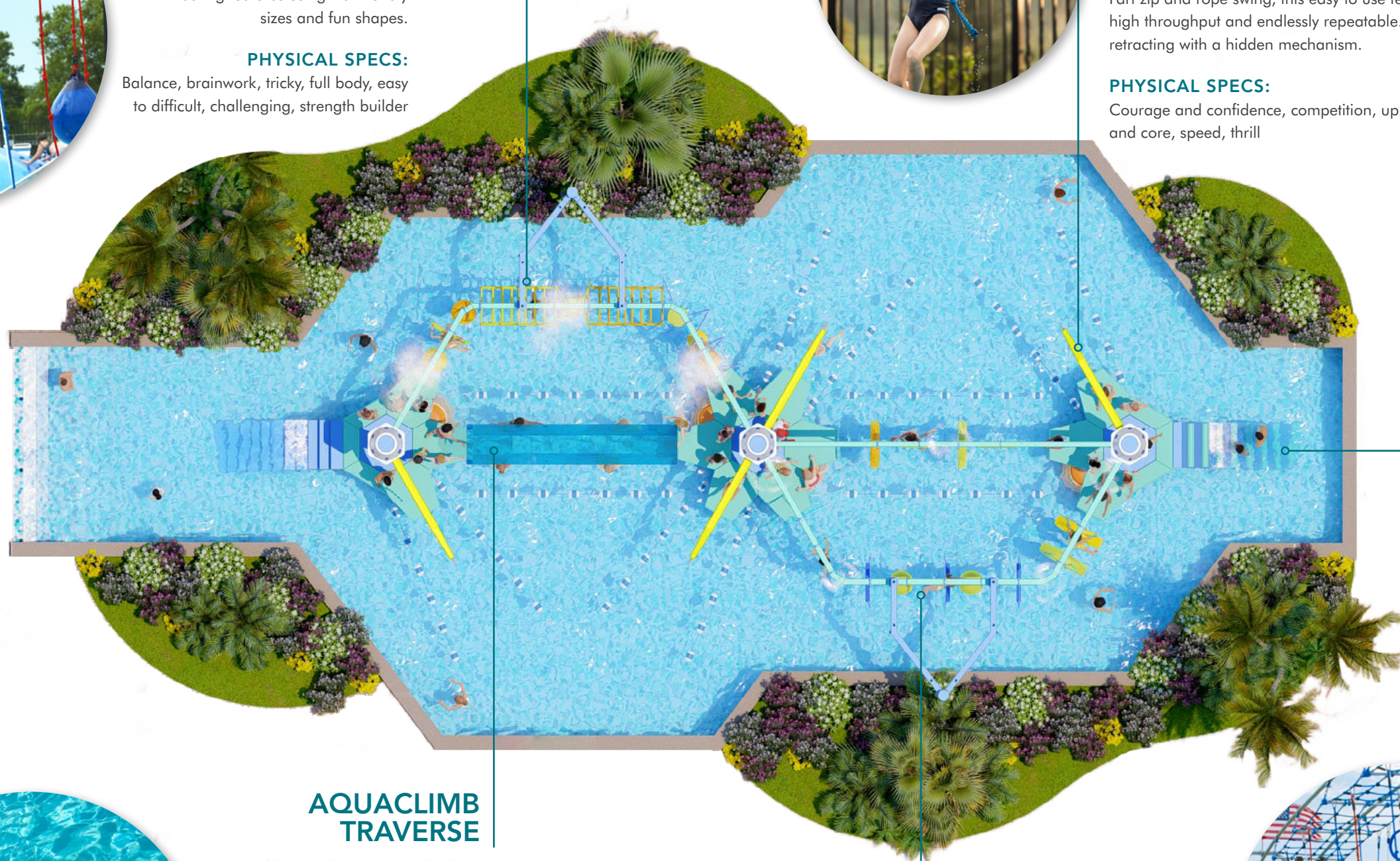


CONE CLIMB, SCRAMBLE RAMP

A playful, barrier-free way to exit the water.

PHYSICAL SPECS:

Fun, climb or crawl, fast and slow, core and full body, accessibility



AQUACLIMB TRAVERSE

Bouldering play on a true climbing wall with no belay.

PHYSICAL SPECS:

Coordination, competition, upper and lower body, problem solving

CANNONBALL RUN

Navigate through a series of suspended cylinders.

PHYSICAL SPECS:

Coordination, courage and confidence, upper and lower body, strength builder, competition



Play Experience

Guests of all ages are encouraged to freely move around the AquaAdventure structure by completing the challenge elements that connect each platform to the other. Not restricted nor supported by a harness, guests are free to move around and free to fall. They're free to watch, free to learn from and encourage others, and free to have fun—it's safe and entertaining social competition.



CHALLENGE BY CHOICE

Our play system allows kids to engage at their own pace, and of their own choosing. Take time, watch, learn, and TRY.

PLAY ANYWAY

We've designed the play system with padded surfaces and other safety measures so that kids can play without boundaries or rigid rules about how to play. They'll get it if we let them... Kids can create their own experience.

FRIENDLY COMPETITION

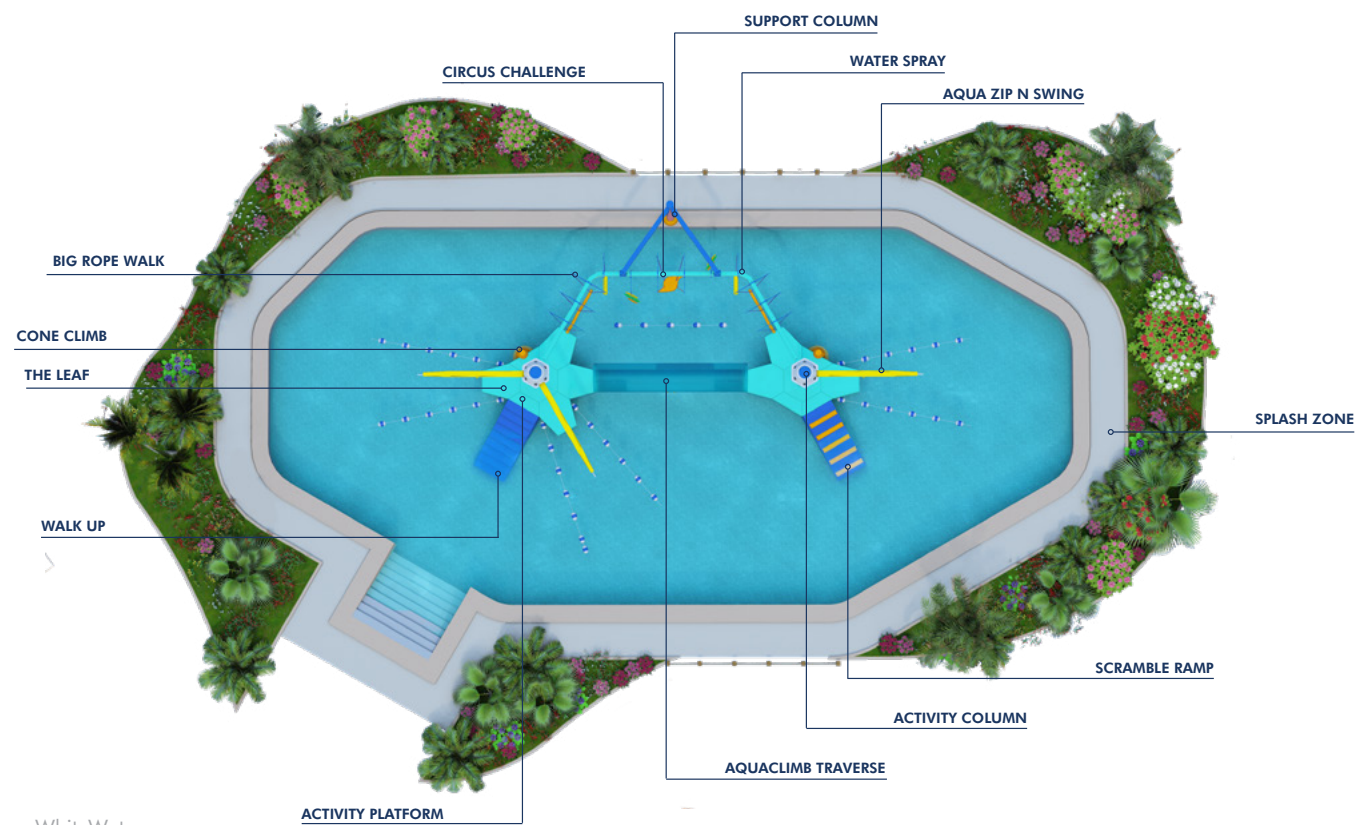
The combination of physical challenges with worry-free play brings out the naturally competitive side.

BUILD COURAGEOUS KIDS

Trying new things and pushing ones limits produces feeling of achievement and helps to build confidence.

NO HARNESS NEEDED

Between the splash pool and padded surfaces, young explorers are free and unencumbered to push their limits.



FEATURES

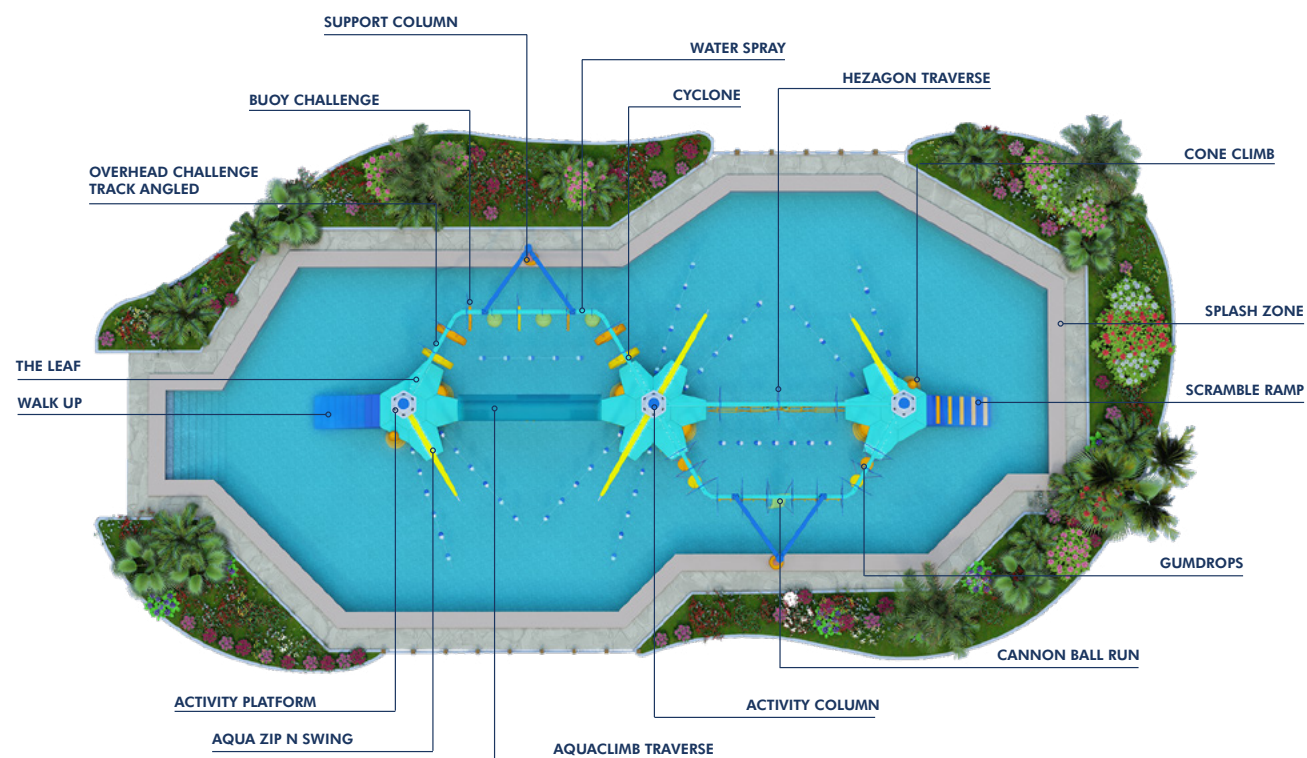
Dimensions	57x32x17ft / 17.4x9.7x5.2m
Play Area	1010ft ² / 93.8m ²
Pool Area	3460ft ² / 321.4m ²
Minimum Pool Depth	48in / 1.2m

Hourly Capacity
207
guests

Total Play Features
28

Platforms
2





FEATURES

Dimensions	87x39x17ft / 26.5x11.9x5.2m
Play Area	1300ft ² / 120.8m ²
Pool Area	4680ft ² / 434.8m ²
Minimum Pool Depth	48in / 1.2m

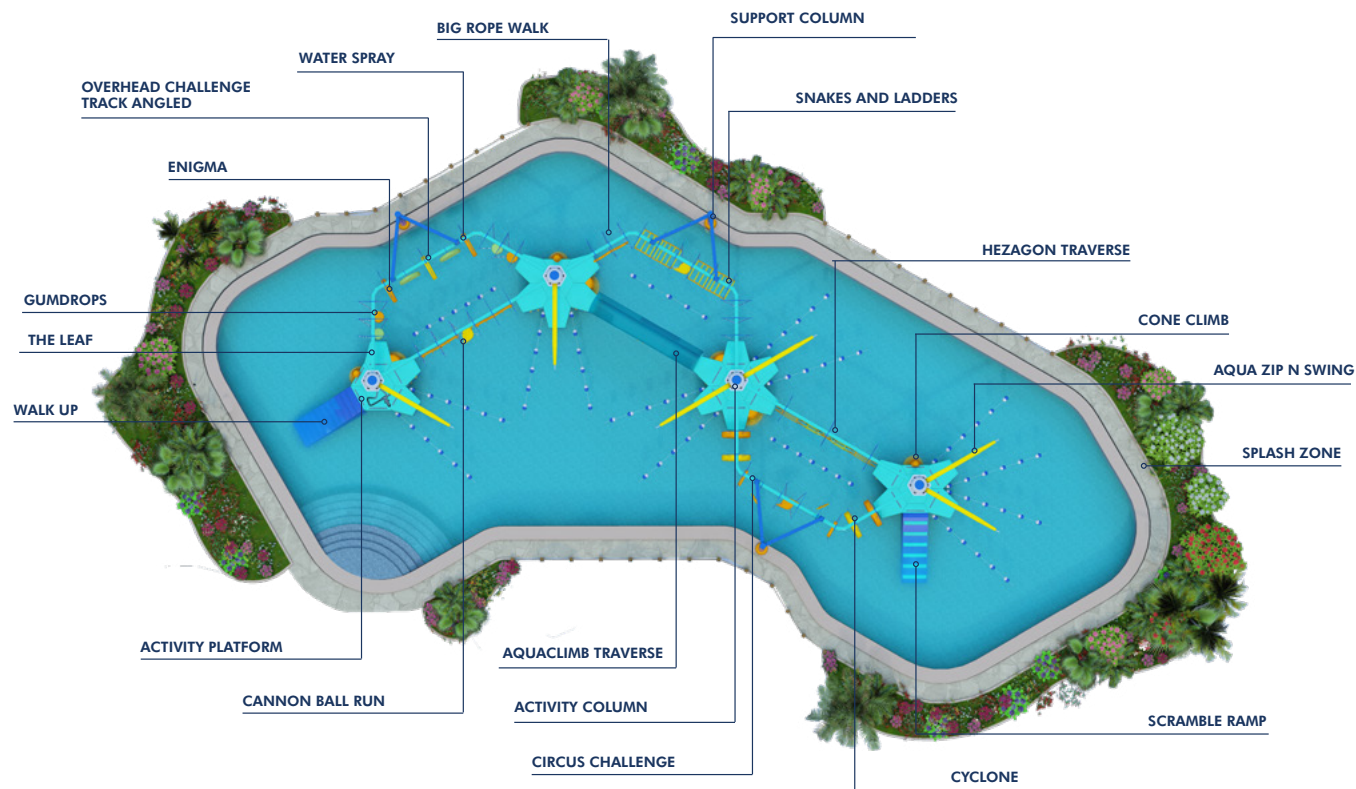


Hourly Capacity	Total Play Features	Platforms
294 guests	30	3





AQAD 4P



FEATURES

Dimensions	104x53x17ft / 31.7x16.2x5.2m
Play Area	3780ft² / 351.2m²
Pool Area	6500ft² / 603.9m²
Minimum Pool Depth	48in / 1.2m

Hourly Capacity

396

guests

Total Play Features

40

Platforms

4





The Future of Aquatic Play

We've added a new attractions category to our repertoire—Challenge by Choice. Now the all too important, and sometimes picky, tweens to teens demographic has a seemingly high stakes ninja course with none of the associated physical restrictions.

Building Courageous Kids

A first-of-its-kind water park attraction based on physical challenge play, AquaAdventure is set in a purpose-built pool with deeper water and a custom fall attenuation system of padding and non-slip surfaces. This system allows kids to take safe risks while choosing their own adventures, helping them to build their confidence and discover their own physical limits.

Building on a Trend

Active adventure-style play has been a growing trend in leisure entertainment for the past couple of years. As younger generations develop new habits and interests, they will seek out new types of experiences—experiences that they might not find at their current water park. AquaAdventure has been designed to appeal to this generation.

Building a Custom Attraction

The first and only permanent adventure-style attraction on the market, AquaAdventure is built of durable industrial quality materials and is ASTM and EN compliant. Available in multiple sizes and configurations, configure your custom model to suit your park's footprint, capacity requirements, and staffing regulations.

When it's time to expand or refresh, AquaAdventure's modularity allows for easy switching and additions of features.

Building an Iconic Park

Offering great spectator appeal, with high visibility for parents to see their little ones, AquaAdventure will become a central hub in your park, where parents will lounge while their kids engage in some friendly competition.

Different from other aquatic play structures, AquaAdventure's purpose-built features, such as a two-sided climbing wall and ropes swing, offer large scale adventures that kids will want to brag about completing.

Limited release spots are available now.



WHITEWATER

EST. 1980

WhiteWater was born in 1980 with one clear purpose, to create places where families unite and make joyful lasting memories.

We achieve this by standing alongside our customers from concept to completion of award-winning attractions, from slides to water rides and everything in between. We aim to inspire our clients by unleashing our creativity to realize their ambitions; we craft solutions which make each park unique. We are dedicated to making products that operators can count on, because we understand the importance of reliability and efficiency on the bottom line.

As market leaders, we put our success down to our attitude, in all our years we've never once forgotten why we're here – to help parks solve problems, create immersive experiences, and delight guests all over the world.

We're here to create places where fun thrives.

Head Office (Vancouver)
+1.604.273.1068
whitewater@whitewaterwest.com
www.whitewaterwest.com

Asia Pacific Office (Shanghai)
+86 21 32567586
www.whitewaterwest.cn

Middle East Office (Dubai)
+971 (0) 4 422 9318
www.whitewaterwest.ae

Europe Office (Munich)
+49 89 904 2282 30