



WHITEWATER®

Entertain the Possibilities

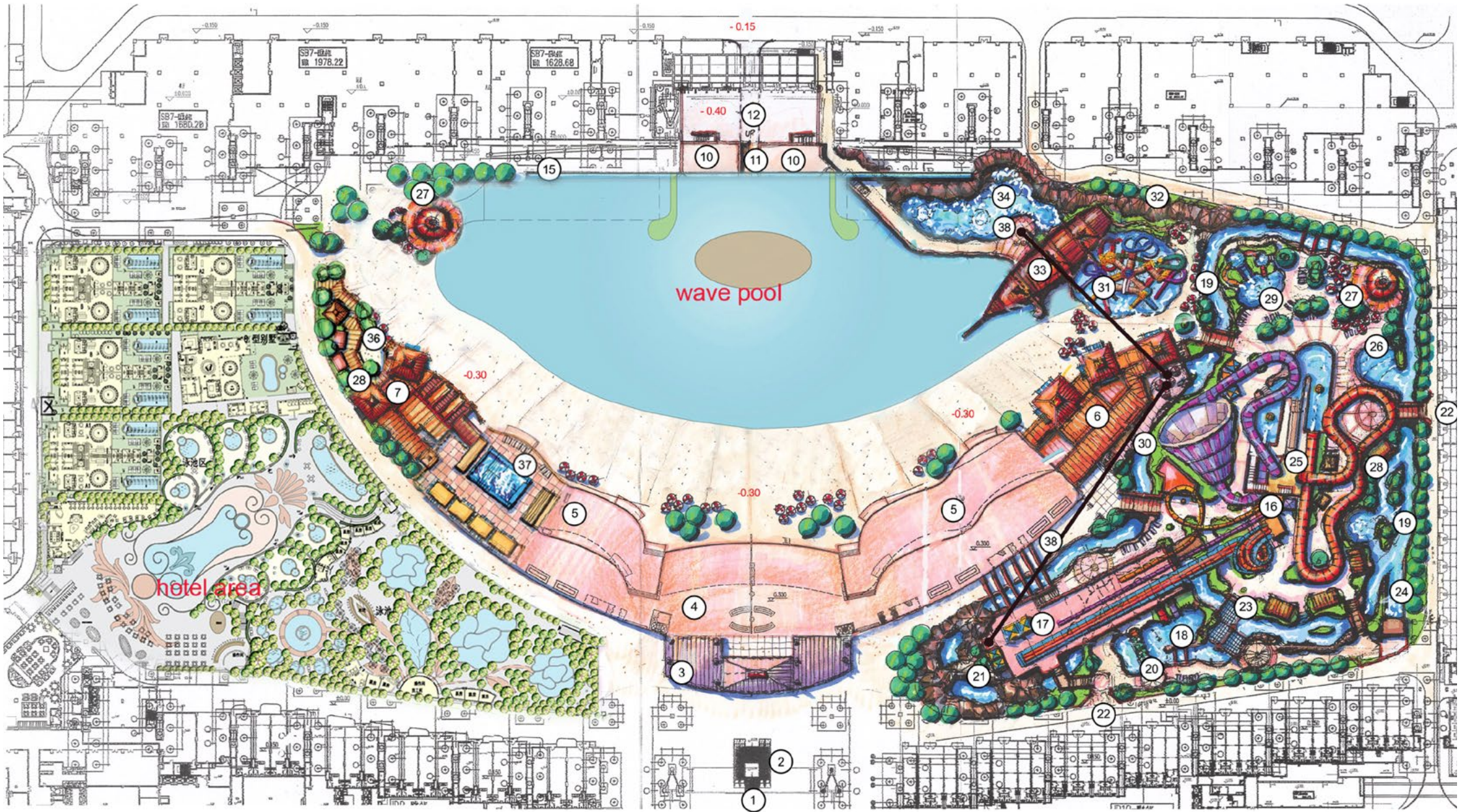
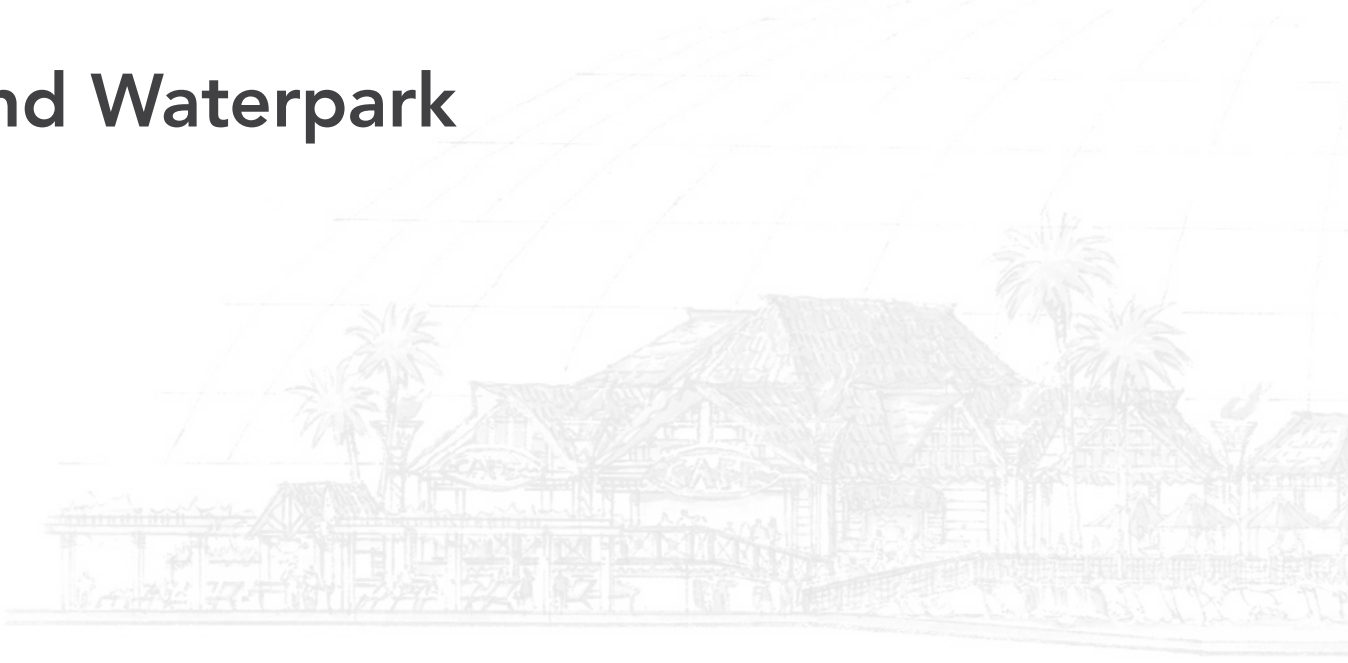
Design Portfolio

Chengdu Paradise Island Waterpark

Chengdu, Sichuan



OPENED 2013
SIZE 8 Ha
VENUE TYPE Indoor
SCOPE OF WORK Concept Design



- LEGEND**

 - 1. AQUARIUM
 - 2. ACCESS TO CHANGE ROOMS / WASHROOMS
 - 3. THEMATIC GATE WITH ROOFS
 - 4. FEATURE RESTAURANT
 - 5. LOUNGING, DINING DECKS UNDER TENSILE ROOFS
 - 6. FEATURE RESTAURANT FOR IN/OUT OF PARK PATRONS / VIEWING
 - 7. VIEWING / LOUNGING/ FOOD SERVICE FOR WATERPARK PATRONS
 - 8. WAVEPOOL
 - 9. CENTRAL GRAND STAGE
 - 10. MECHANICAL ROOM / SERVICE / ST
- 11. ACCESS RAMP TO STAGE LEVEL
 - 12. ACCESS YARD
 - 13. 50 m SWIMMING / LAP POOL
 - 14. LIFEGUARD / FIRST AID
 - 15. 125 m LONG LED SCREEN
 - 16. SLIDE COMPLEX W/ 4 LANE WIZZARD MAT RACER / FREEFALL AND AQUALOOP
 - 17. LANDING DECK / PLATFORM 4.5 M ABOVE LAZY RIVER
 - 18. ADVENTURE POOL WITH DROP SLIDES
 - 19. LAZY RIVER
 - 20. LILYPAD WALK
- 21. WATERFALL TO LAZY RIVER
 - 22. ACCESS FROM HOTEL TO WATER PARK
 - 23. ROPECOURSE ABOVE LAZY RIVER
 - 24. WAVE CHANNEL
 - 25. TUBE SLIDES COMPLEX WITH ABYSS AND FRR
 - 26. ZERO BEACH ACCESS
 - 27. F+B OUTLET
 - 28. SATELLITE REST ROOMS
 - 29. KIDS POOL W/ SLIDES
 - 30. LOUNGING / VIEWING DECK (ABOVE LAZY RIVER)
 - 31. AP STRUCTURE RF-5a
- 32. OVERSIZED ROCKWORK
 - 33. TALL SHIP THEMATIC FEATURE
 - 34. WATERFALLS
 - 35. REST AREA WITH SPAS / POOLS / WATERPLAY PLAZA / RESTROOMS + MASSAGE + SAUNA / STEAMROOM FACILITIES
 - 36. BOARDWALK/SMALL CHAPEL
 - 37. DOUBLE FLOW RIDER AREA
 - 38. ZIP LINE



Chimelong Waterpark

Panyu, Guangdong



OPENED	2007
SIZE	22 Ha
VENUE TYPE	Outdoor Waterpark
SCOPE OF WORK	Concept Design

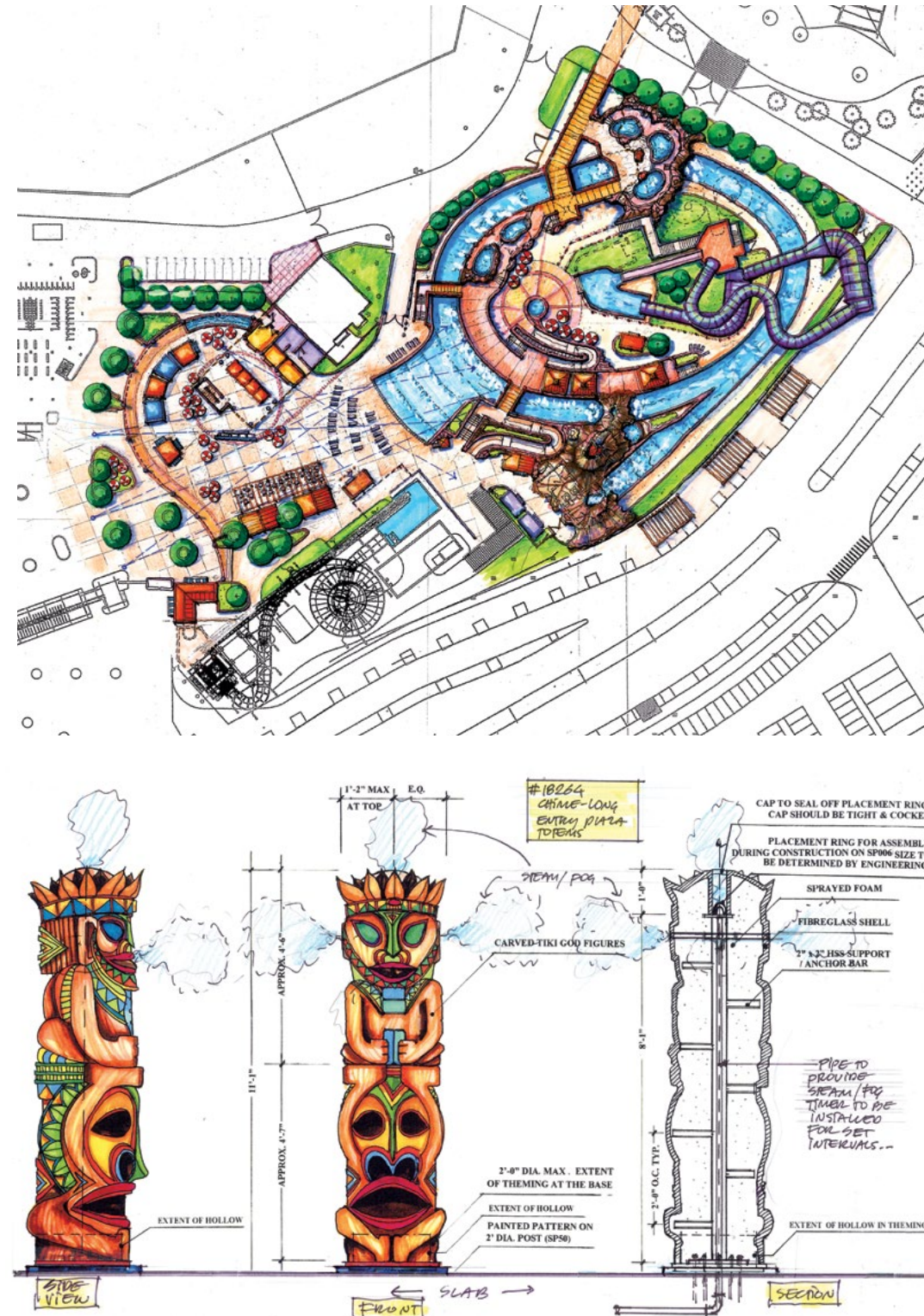


IAAPA
Must-See Water Park 2007



World's Highest...
World's Highest Attended Waterpark 2014

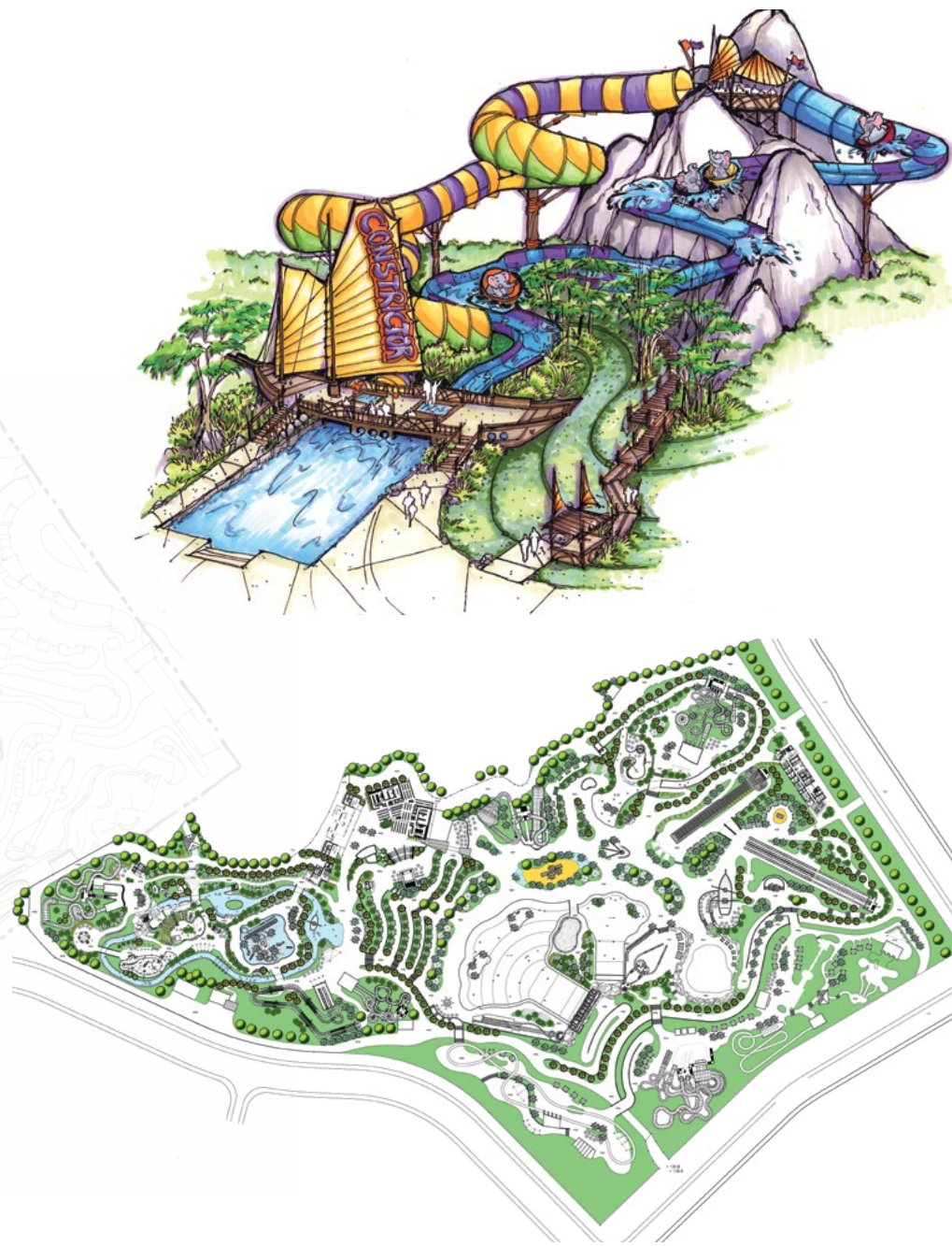




Dragon Elephant Waterpark

Haikou, Hainan

OPENED 2017
SIZE 16.5 Ha
VENUE TYPE Outdoor
SCOPE OF WORK Concept Design, Schematic Design



HotGo Waterpark

Fushun, Liaoning

OPENED	2011
SIZE	Indoor 1.2 Ha Outdoor 8 Ha
VENUE TYPE	Indoor & Outdoor
SCOPE OF WORK	Concept Design, Schematic Design





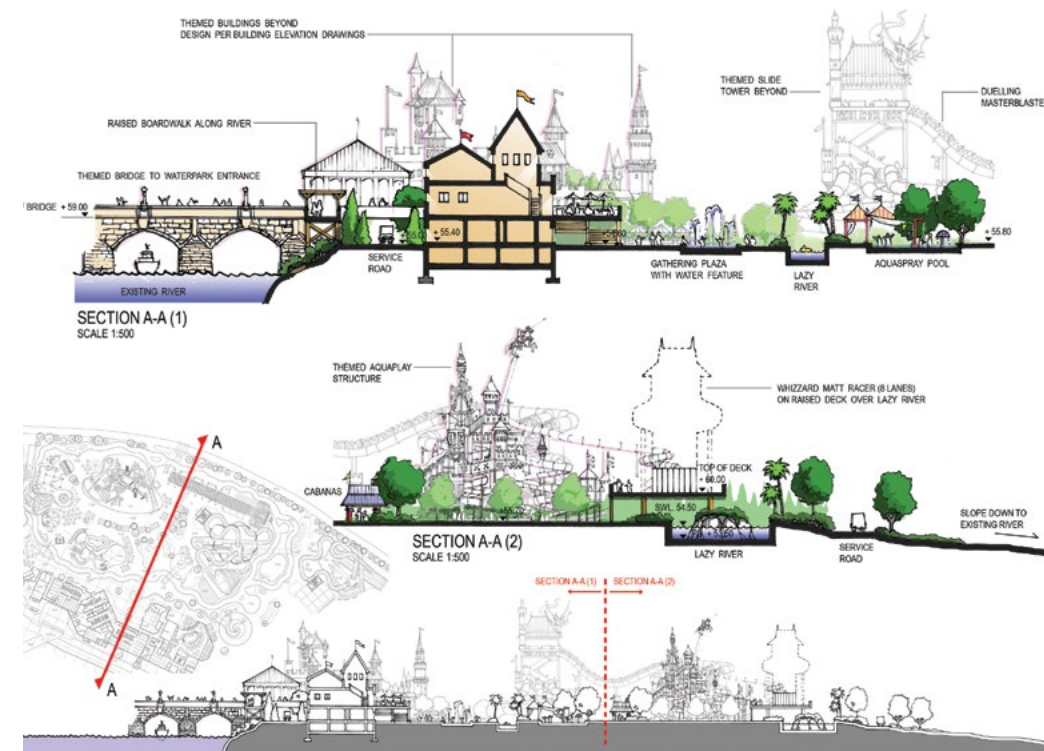
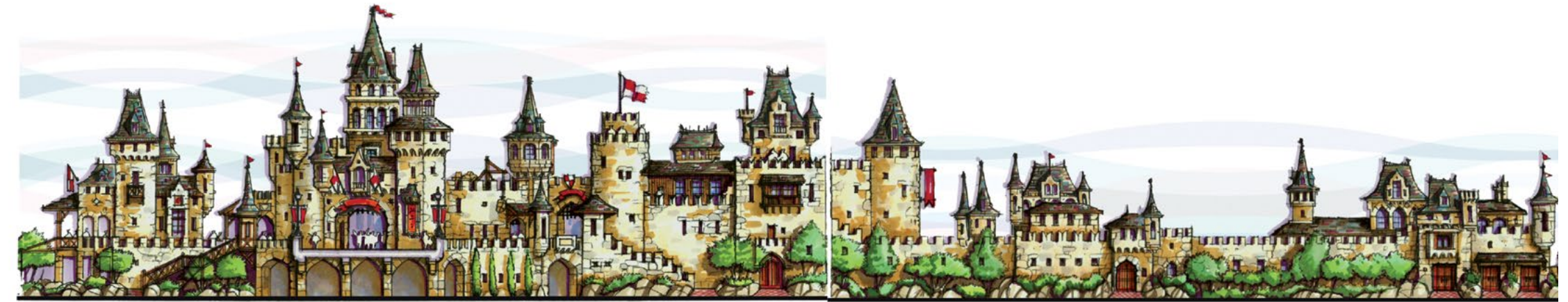
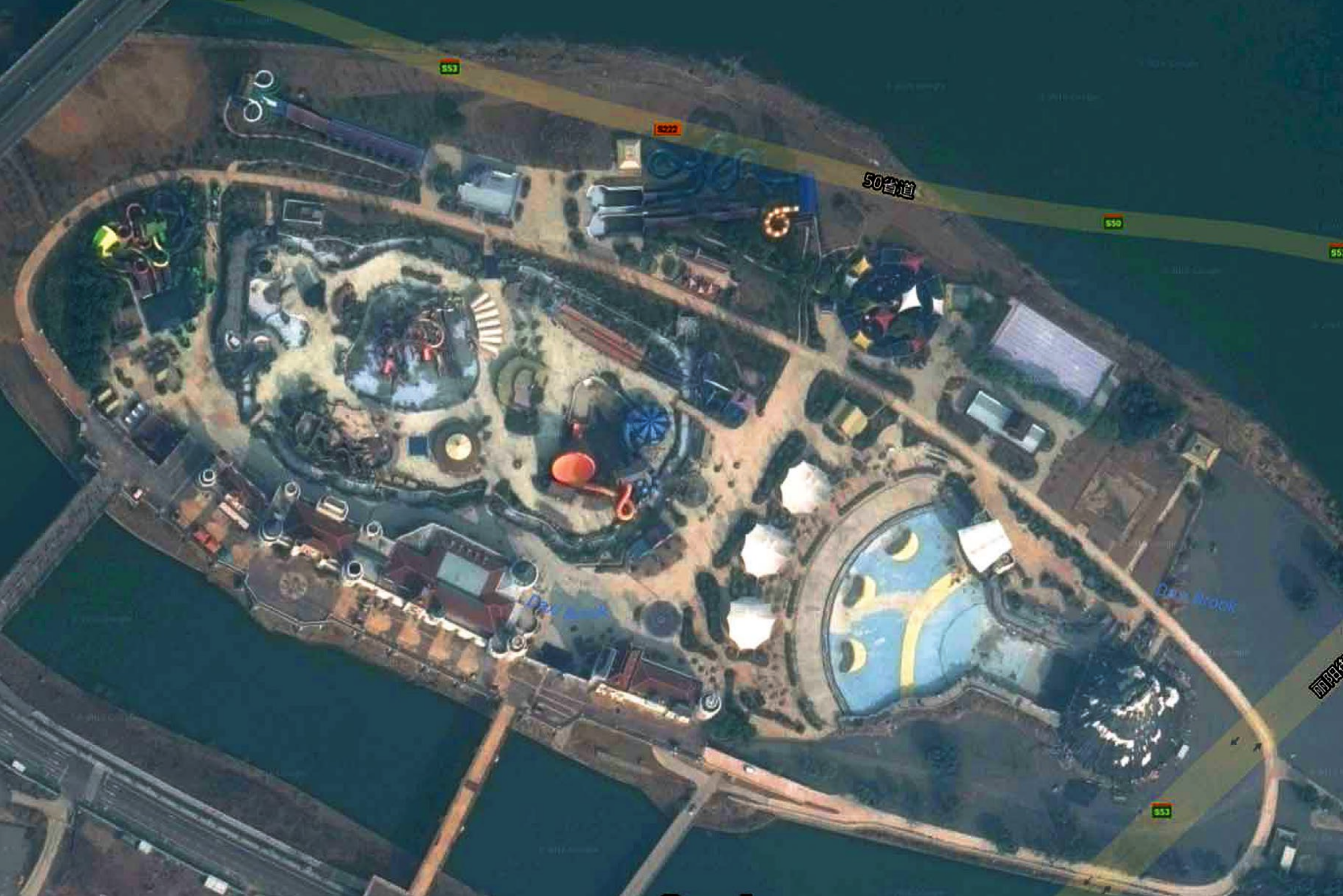
Grand Sight Adventure Island Waterpark

Lishui, Zhejiang



OPENED 2013
SIZE 6 Ha
VENUE TYPE Outdoor
SCOPE OF WORK Concept Design, Schematic Design

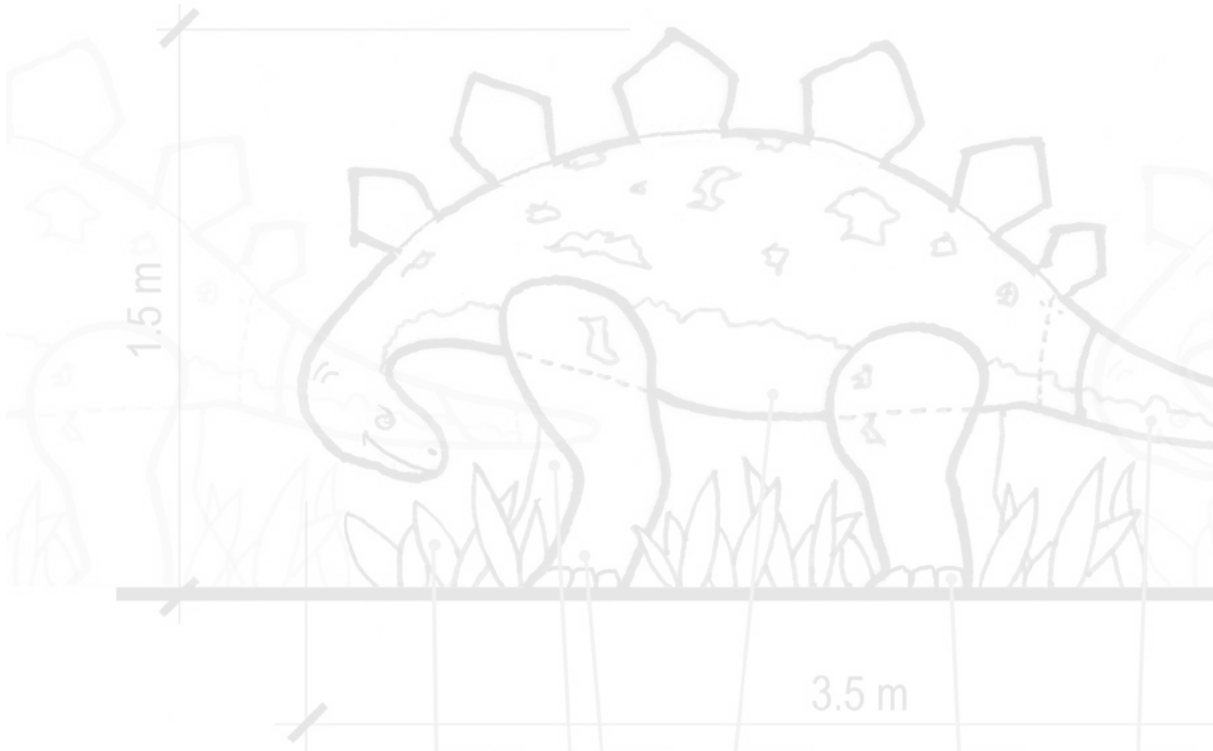




Changzhou Dinosaur Park Lubura Waterpark

Changzhou, Jiangsu

OPENED	2011
SIZE	3 Ha
VENUE TYPE	Outdoor
SCOPE OF WORK	Concept Design, Schematic Design



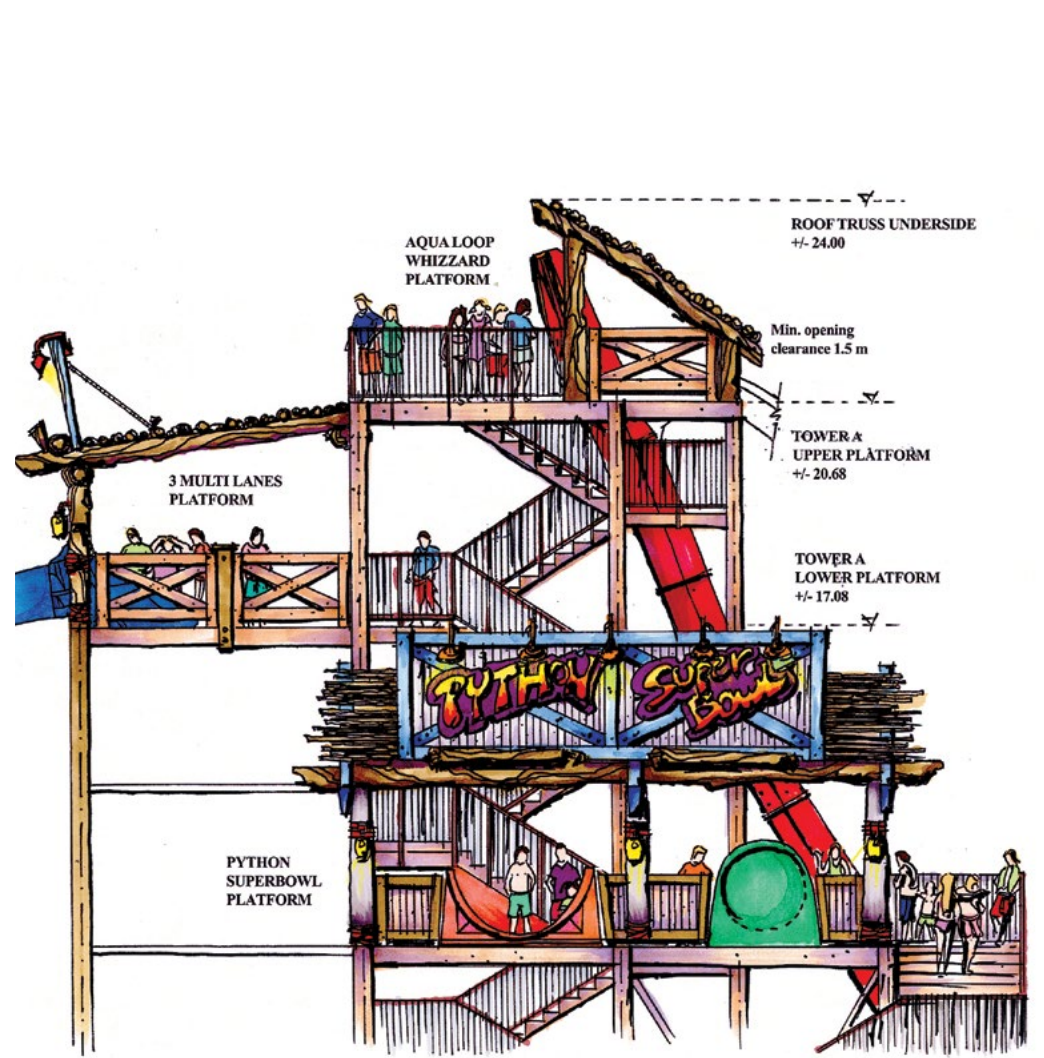
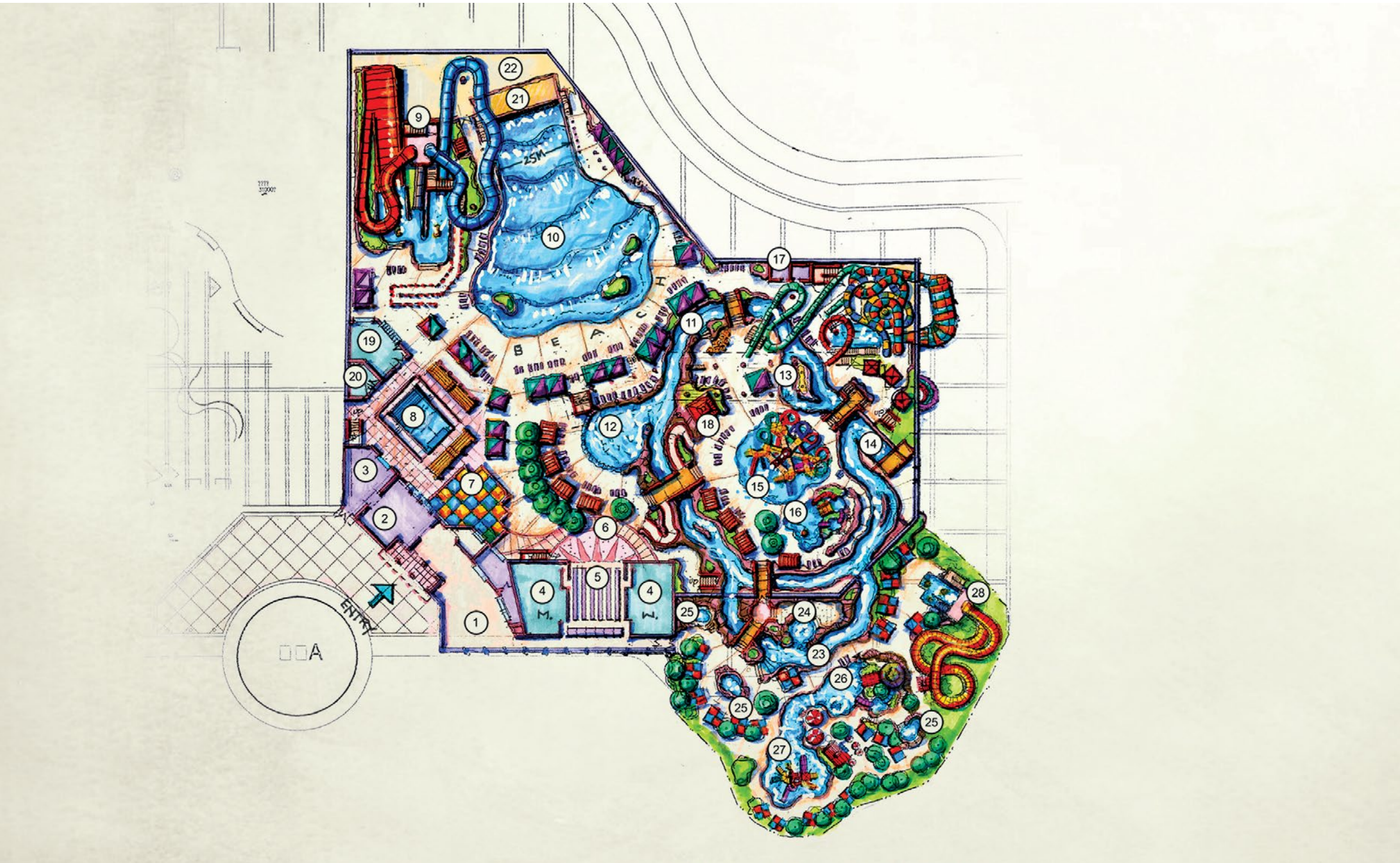


Nantong Adventure Kingdom Water World

Nantong, Jiangsu

OPENED	2014
SIZE	2.3 Ha
VENUE TYPE	Indoor
SCOPE OF WORK	Concept Design, Schematic Design





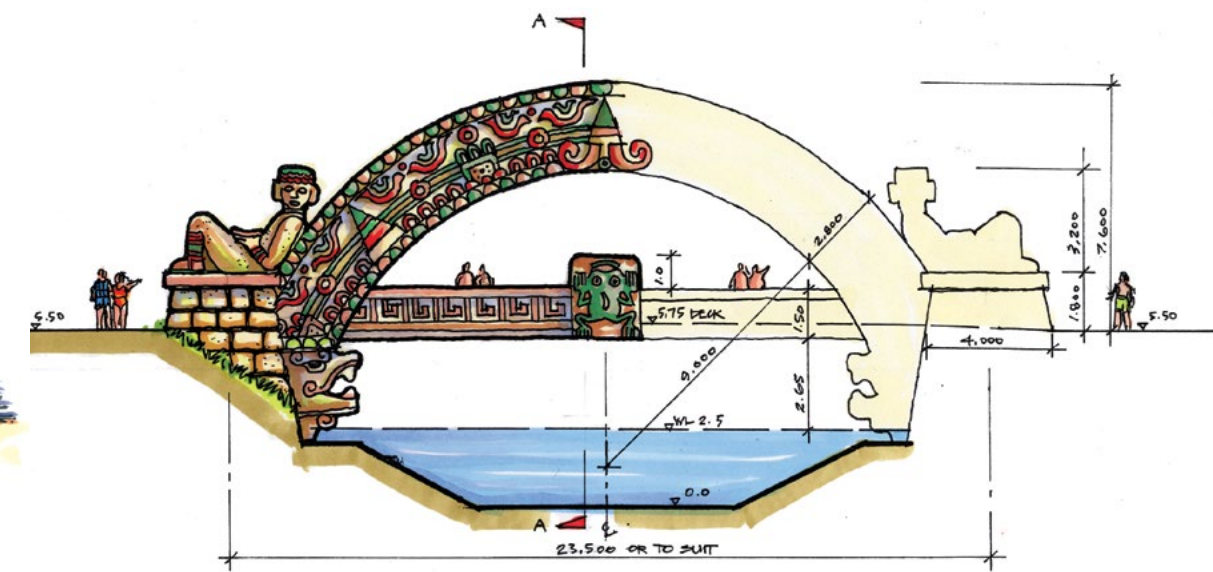
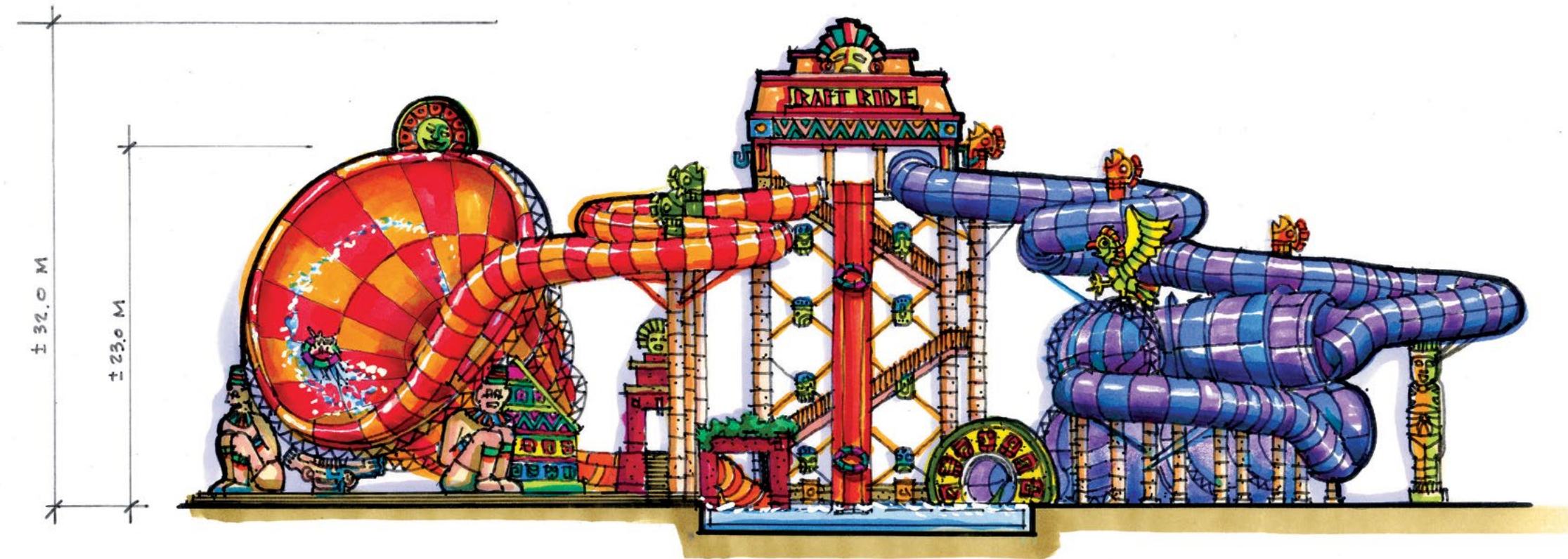
OCT Shanghai Playa Maya Waterpark

Shanghai



OPENED 2013
SIZE 12 Ha
VENUE TYPE Outdoor
SCOPE OF WORK Concept Design, Schematic Design





Tianmu Lake Water World


Liyang, Jiangsu

OPENED	2014
SIZE	4.2 Ha
VENUE TYPE	Outdoor
SCOPE OF WORK	Concept Design



Wanda Changbaishan

Changbaishan, Jilin

 万达集团 WANDA GROUP	OPENED	2016
	SIZE	2 Ha
	VENUE TYPE	Indoor
	SCOPE OF WORK	Concept Design, Schematic Design



Yinji Kaifeng Water World

Kaifeng, Henan



OPENED	2015
SIZE	Indoor 2 Ha Outdoor 15 Ha
VENUE TYPE	Indoor & Outdoor
SCOPE OF WORK	Concept Design, Schematic Design



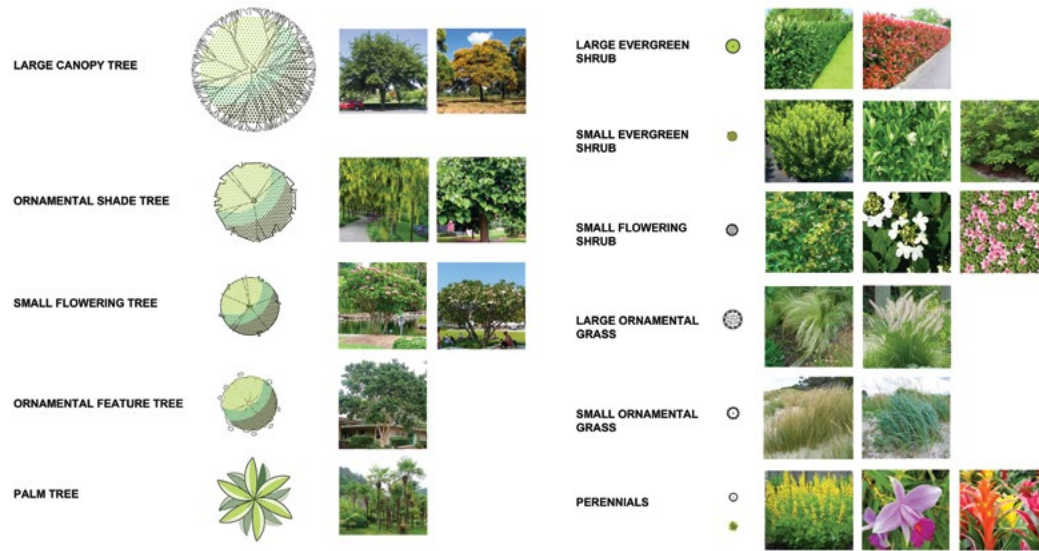
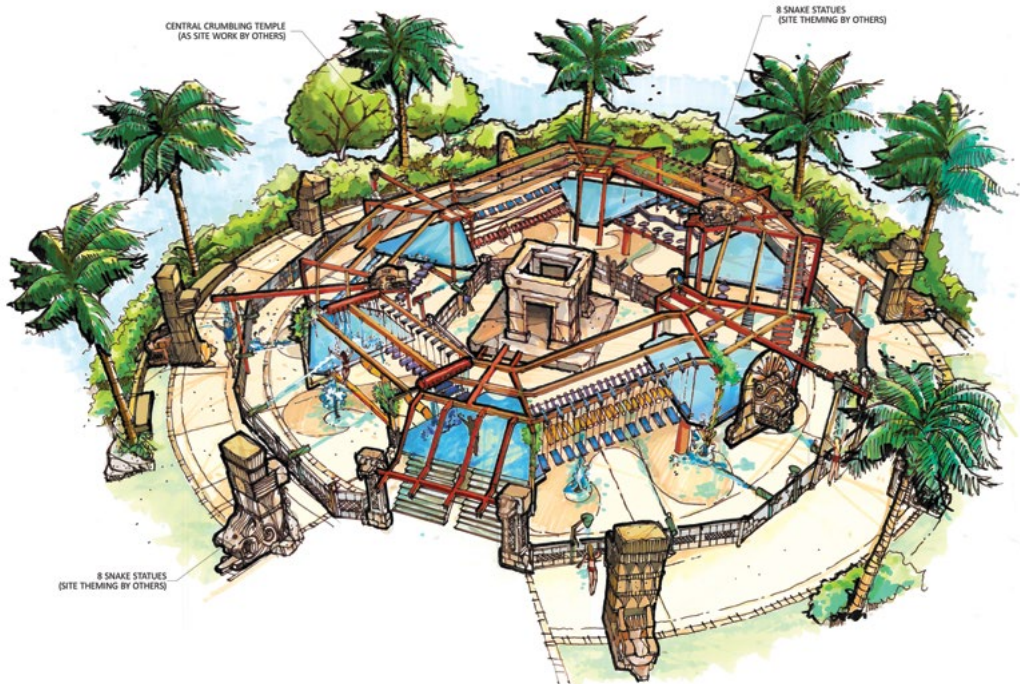
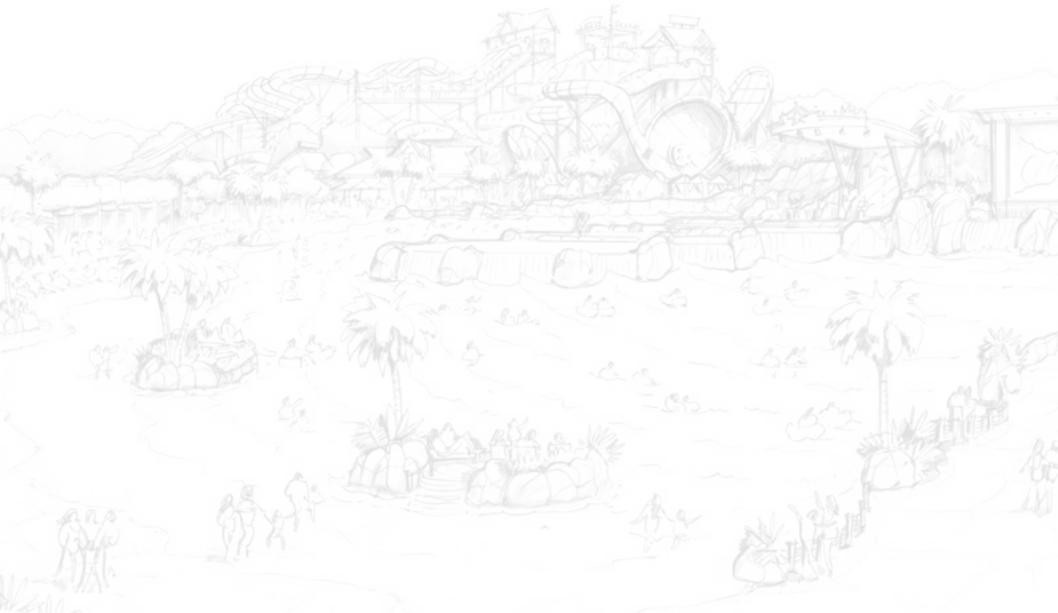


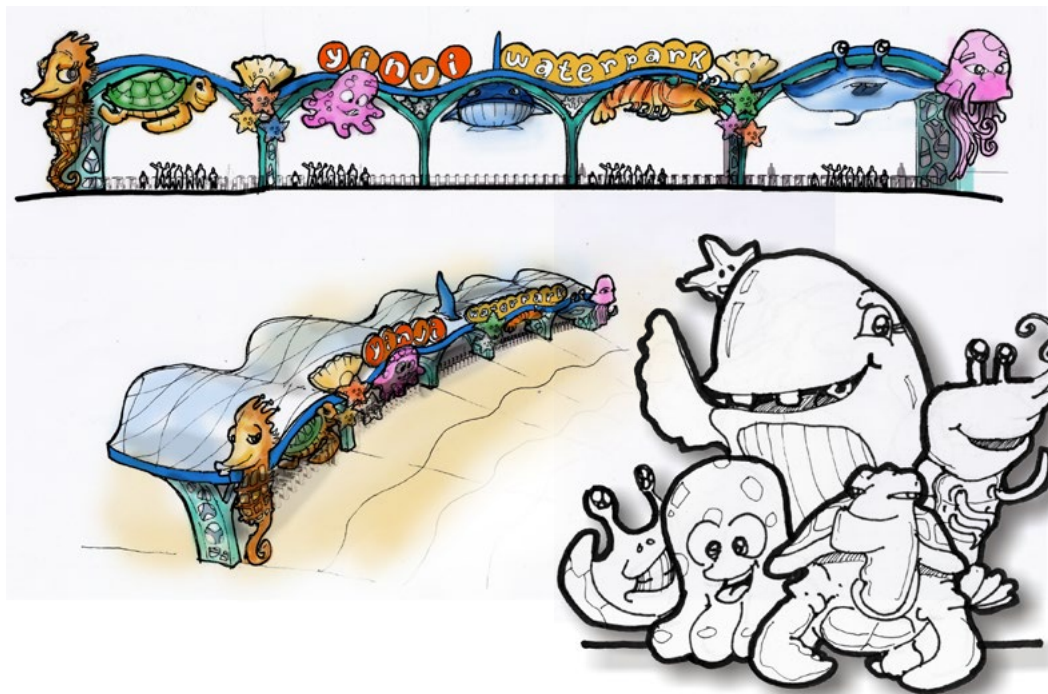
Yinji XinMi Waterpark

Henan Sheng, China



OPENED 2016
SIZE 13 Ha
VENUE TYPE Outdoor

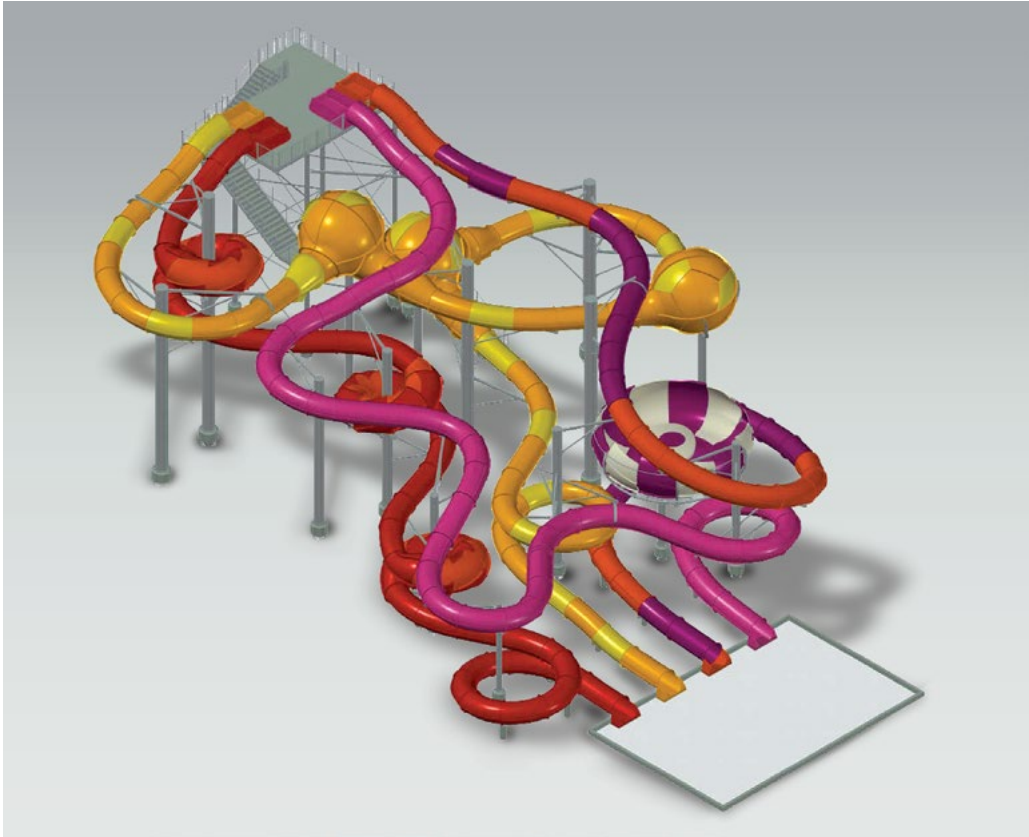




Huquan Hot Spring Water World

Yunnan Province

OPENED 2017
SIZE 7.5 Ha
VENUE TYPE Outdoor
SCOPE OF WORK Concept Design



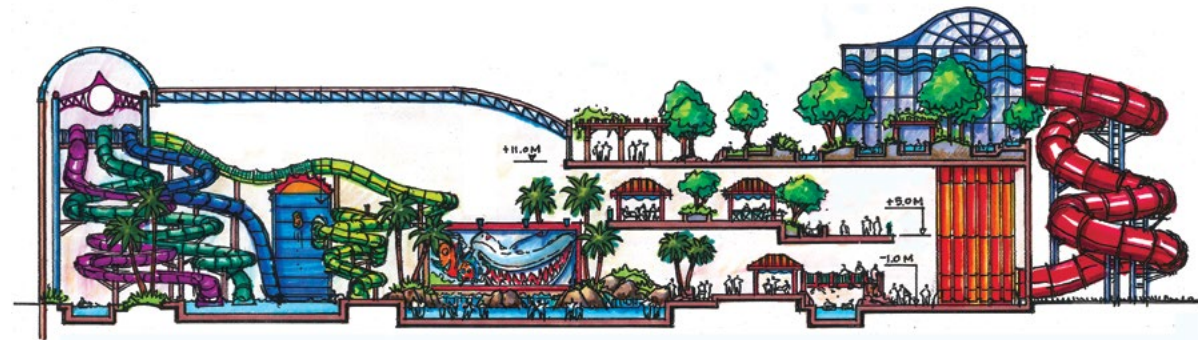
Lotte Gimhae

Jangyu-ro, Gimhae-City, Korea



OPENED	2014
SIZE	Indoor 2.3 Ha Outdoor 10.9 Ha
VENUE TYPE	Indoor & Outdoor
SCOPE OF WORK	Concept Design, Schematic Design & Design Development (in collaboration with Owner's other consultants.)





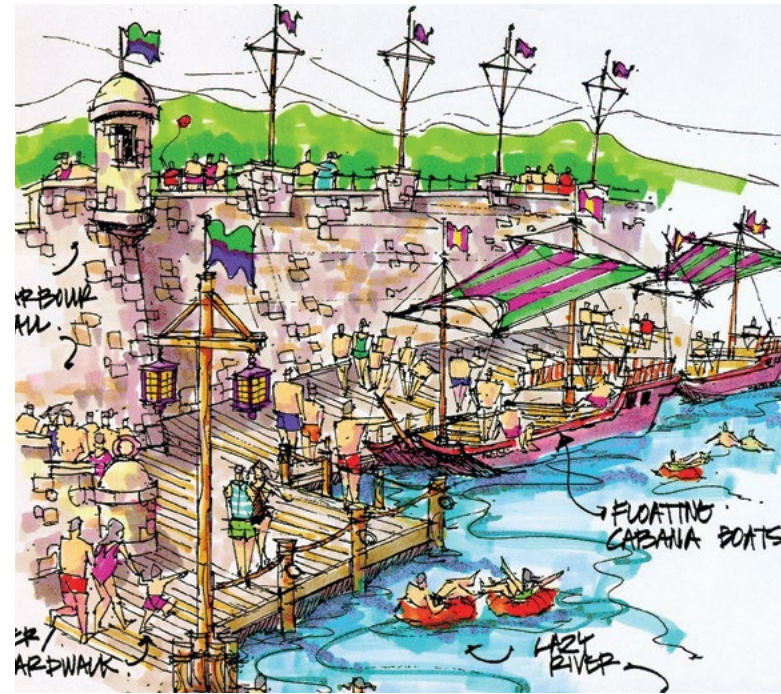
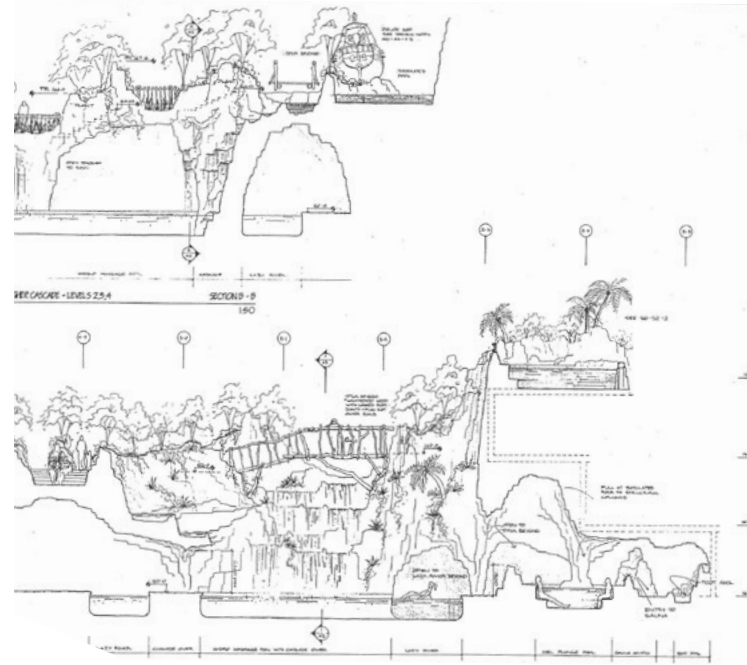
Samsung Caribbean Bay

Yongin City, Kyungki-do, Korea



OPENED	1996
SIZE	Indoor 1 Ha Outdoor 8 Ha
VENUE TYPE	Indoor & Outdoor
SCOPE OF WORK	Concept Design, Schematic Design & Design Development (in collaboration with Owner's other consultants.)



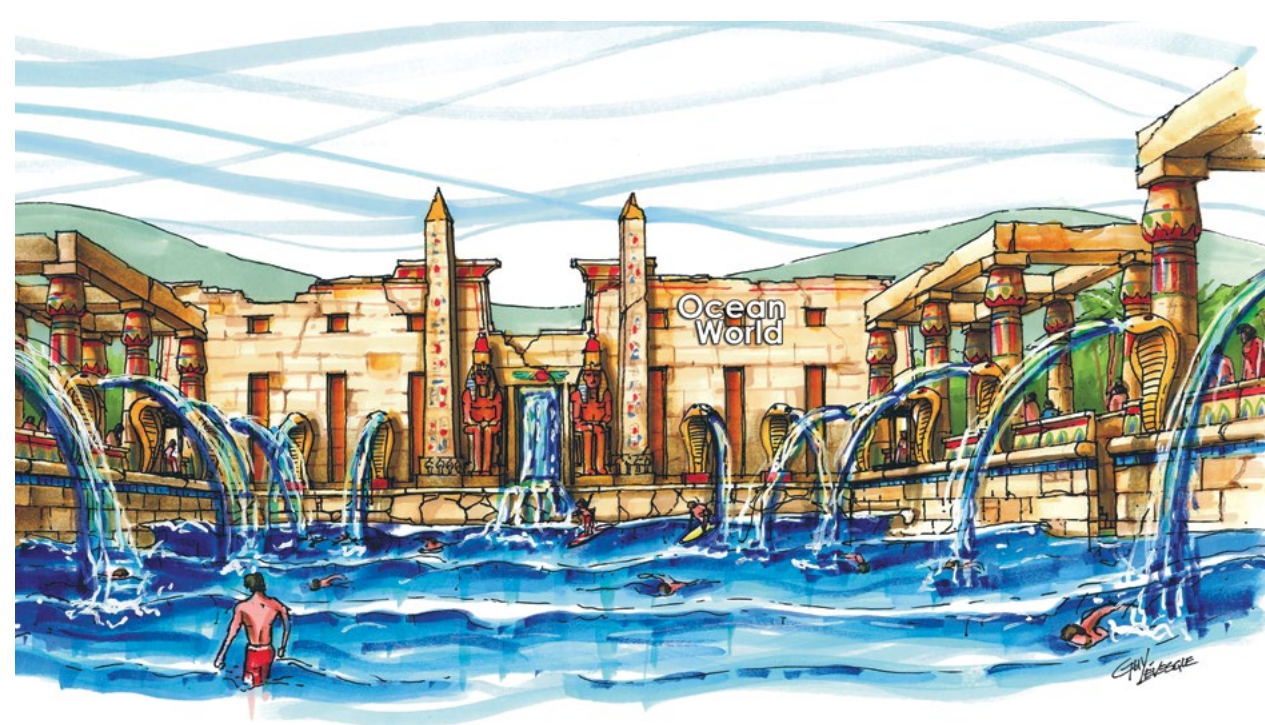


Vivaldi Park Ocean World

Hongcheon-gun, Gangwon-do, Korea

OPENED	2006
SIZE	Indoor 1.3 Ha Outdoor 8.6 Ha
VENUE TYPE	Indoor & Outdoor
SCOPE OF WORK	Concept Design, Schematic Design & Design Development



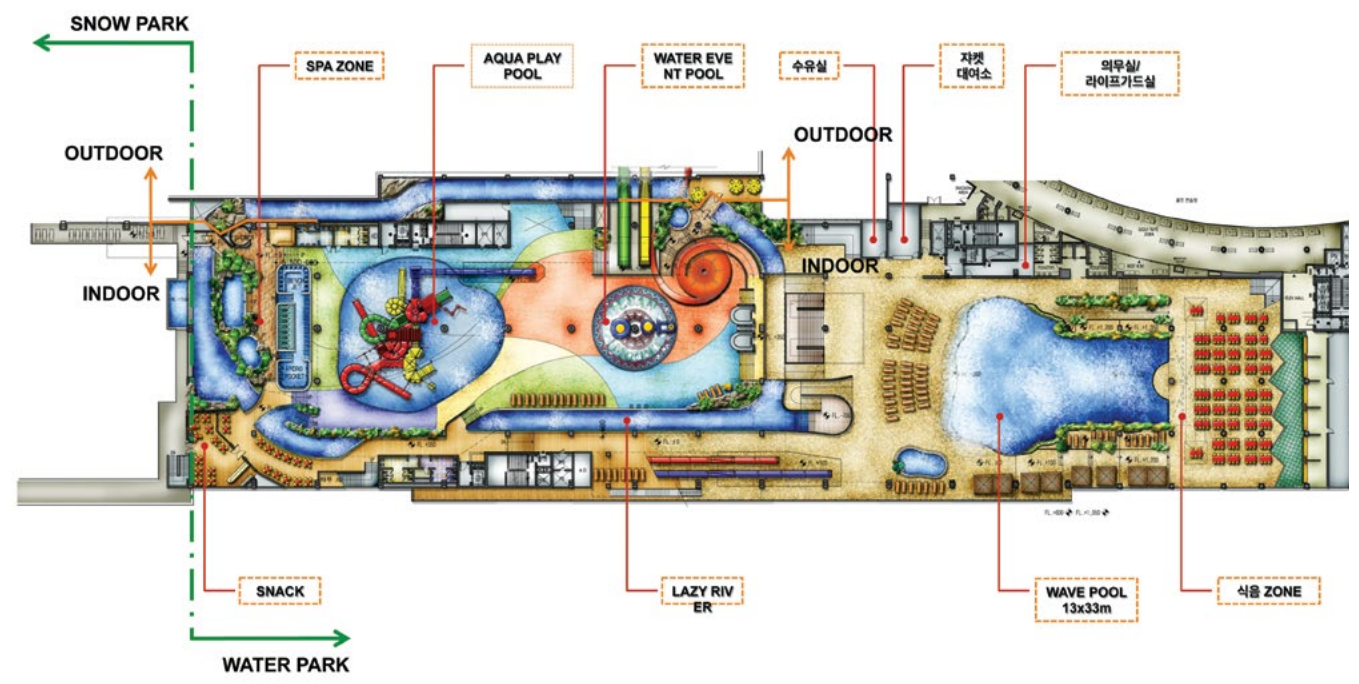
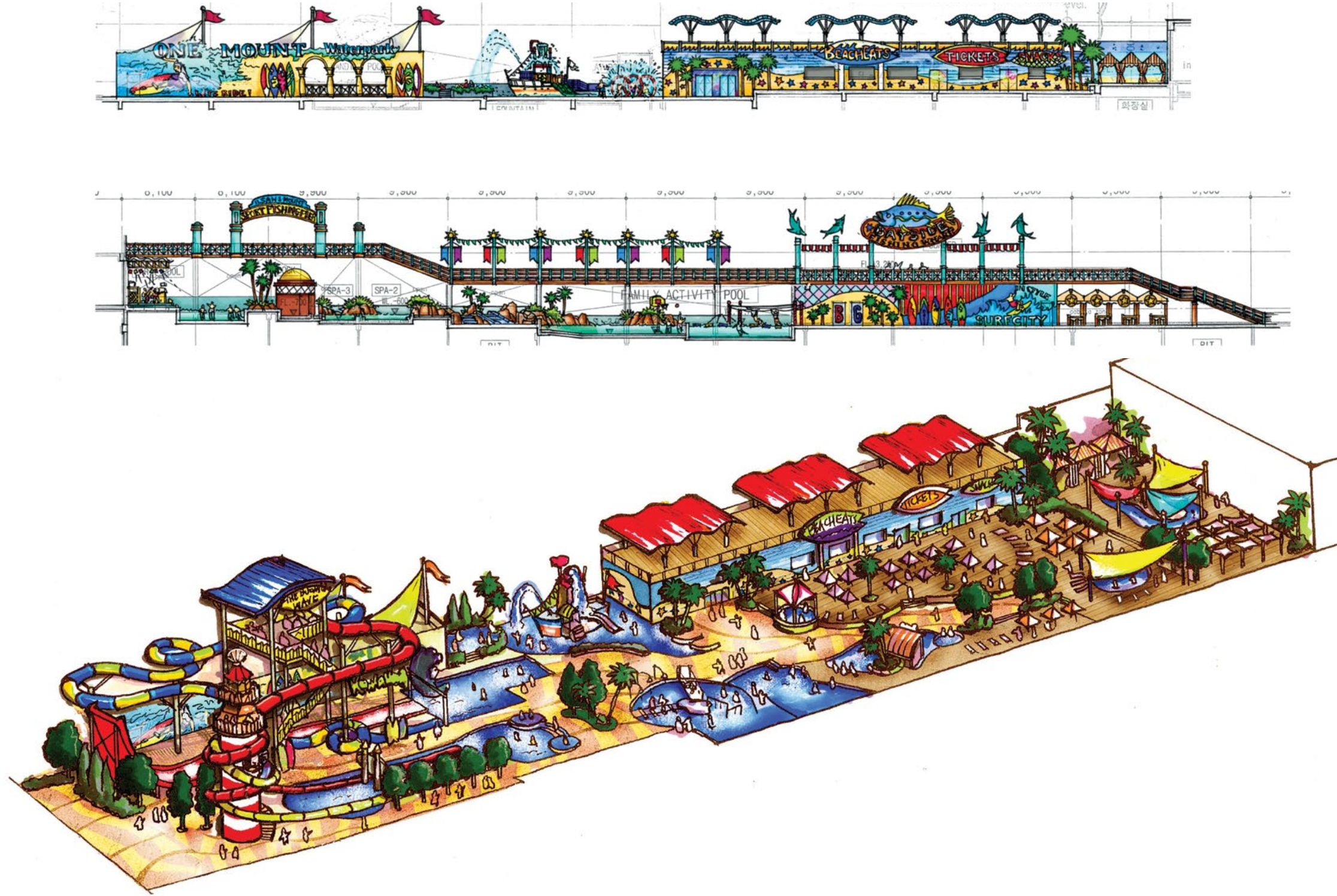


One Mount Korea

Ilsan-gu, Goyang City, Korea

OPENED	2013
SIZE	Indoor 1.5 Ha Outdoor 2.2 Ha
VENUE TYPE	Indoor & Outdoor
SCOPE OF WORK	Concept Design, Schematic Design & Design Development (in collaboration with Owner's other consultants.)





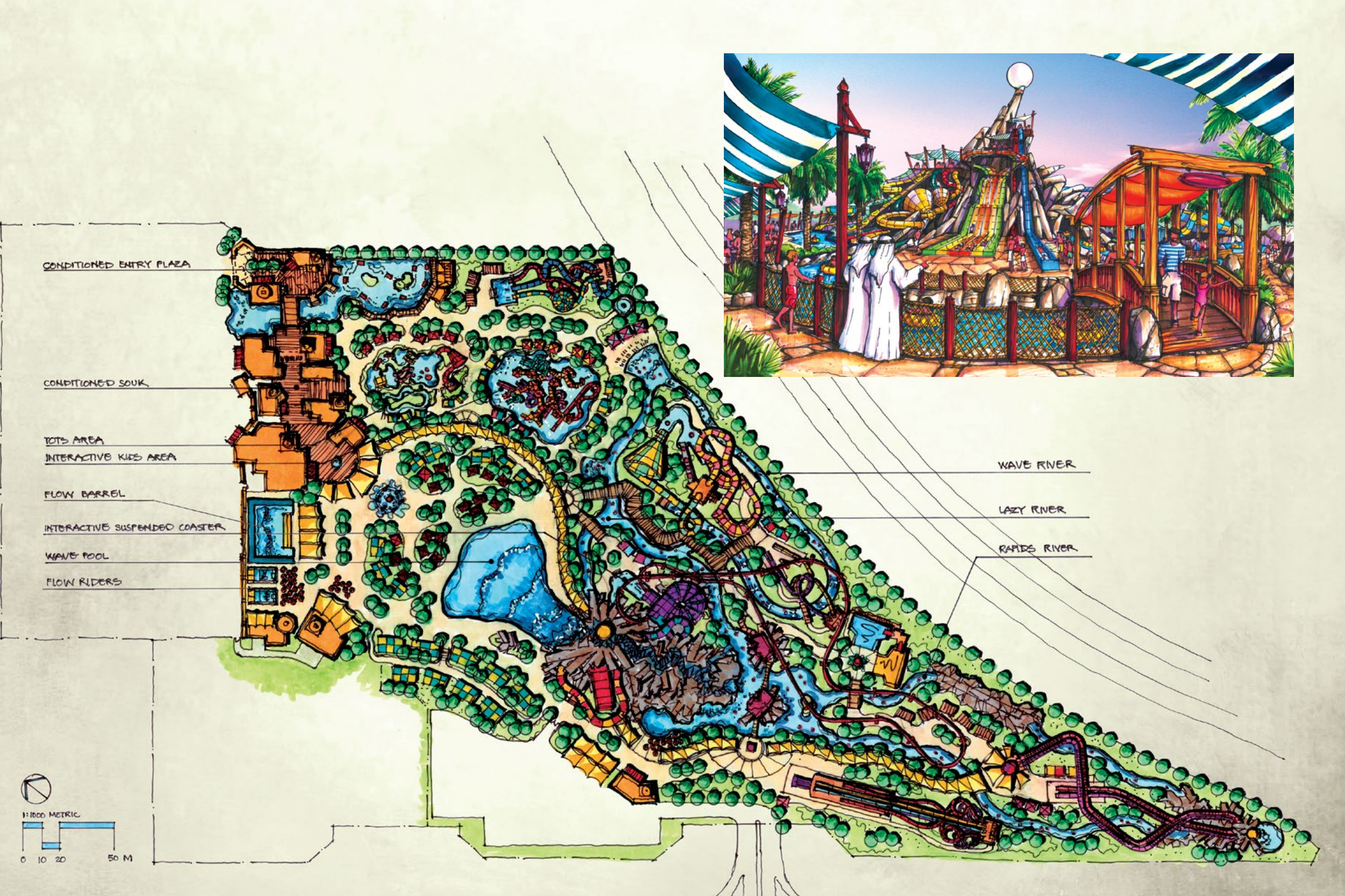
Yas Water World

Abu Dhabi, UAE



OPENED	2013
SIZE	15 Ha
VENUE TYPE	Outdoor
SCOPE OF WORK	Concept Design, Schematic Design

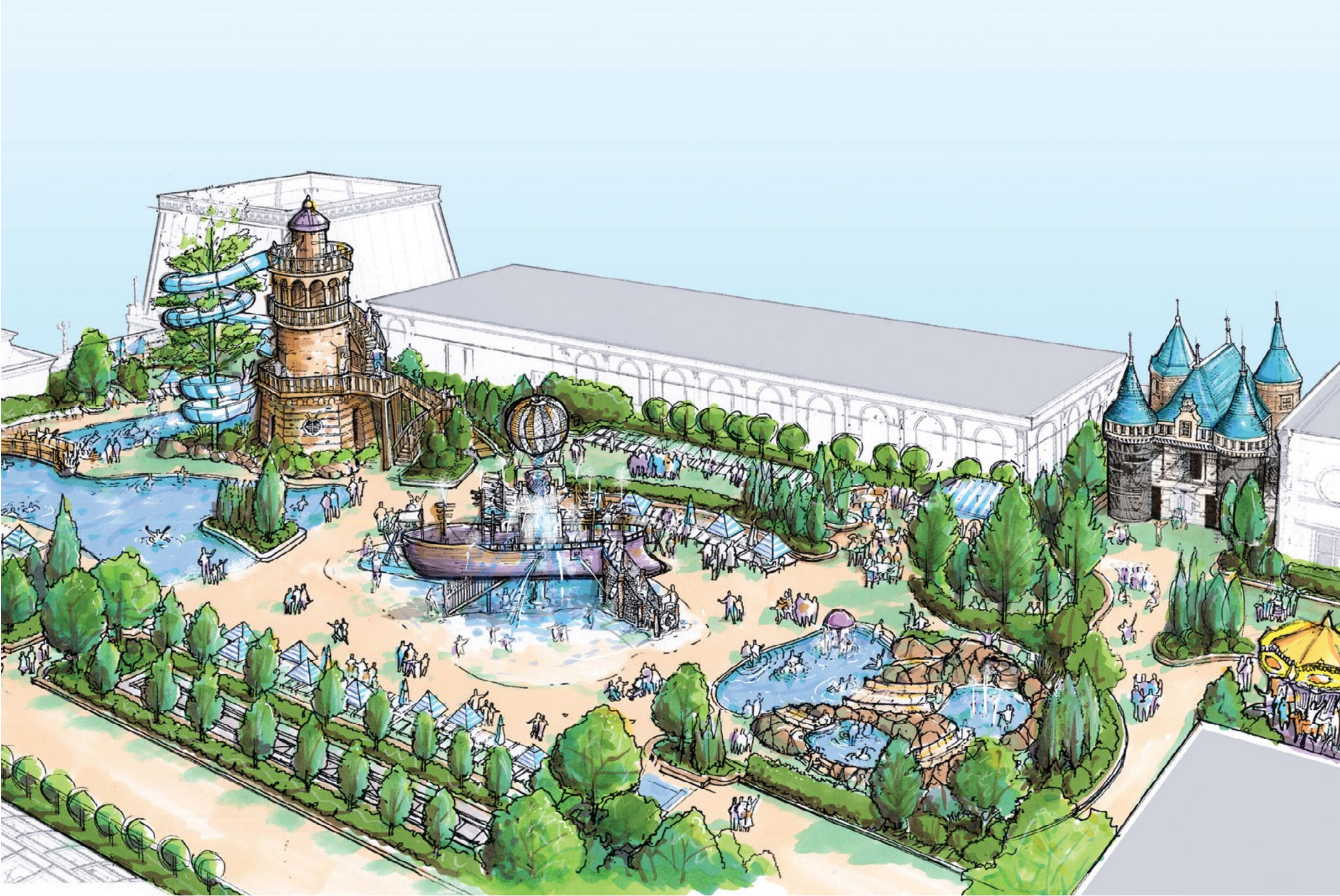


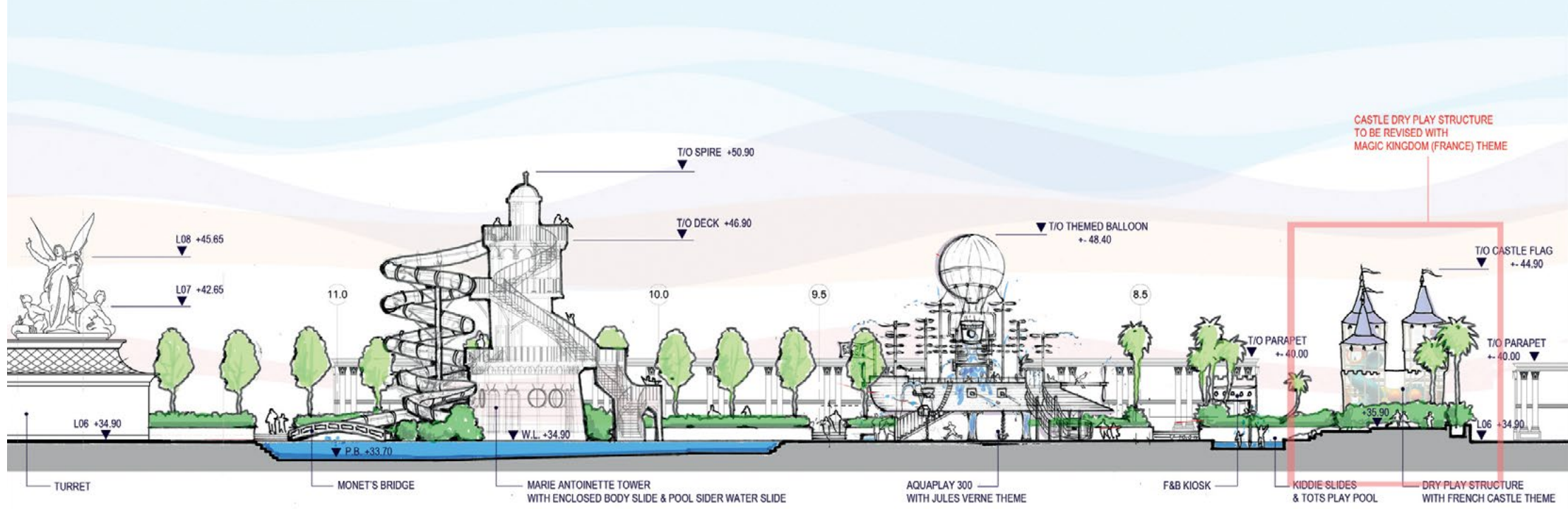


Parisian Cotai Resort Hotel

Cotai, Macau

OPENED 2016
SIZE 0.55 Ha
VENUE TYPE Outdoor







Atlantis The Palm

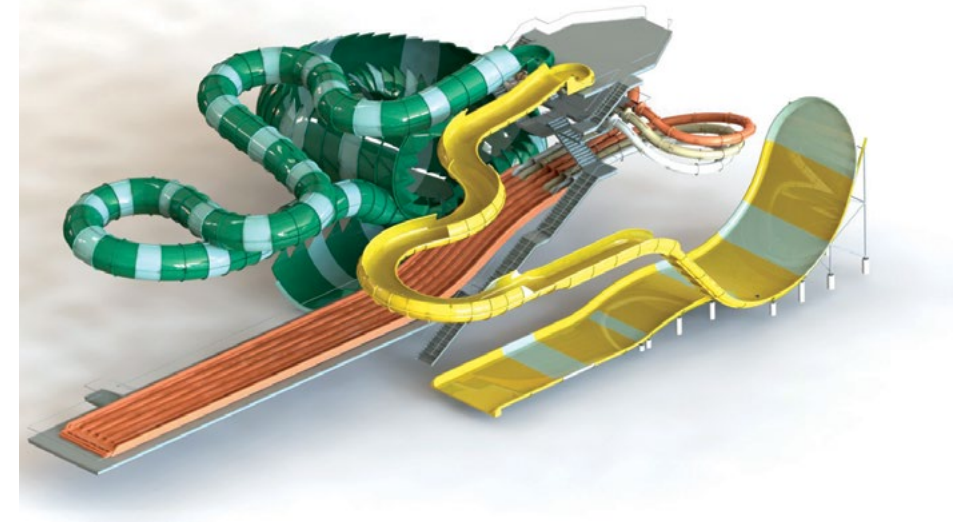
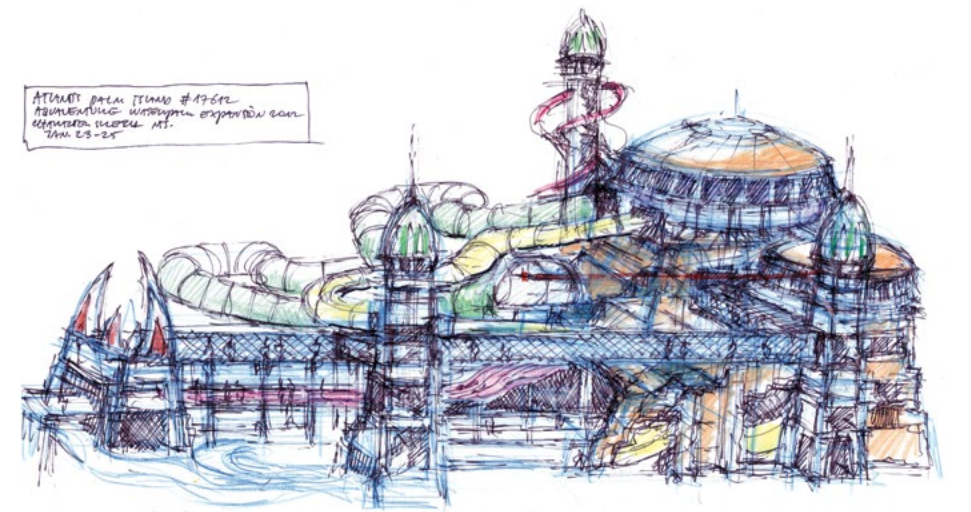
Dubai, UAE

ATLANTIS
THE PALM, DUBAI

OPENED
VENUE TYPE

2008
Outdoor





Ramayana

Thailand

OPENED	2016
SIZE	14 Ha
VENUE TYPE	Outdoor
SCOPE OF WORK	Concept Design, Schematic Design





Vana Nava Water Jungle

Hua Hin, Thailand



OPENED	2014
SIZE	2.3 Ha
VENUE TYPE	Outdoor
SCOPE OF WORK	Concept Design, Schematic Design



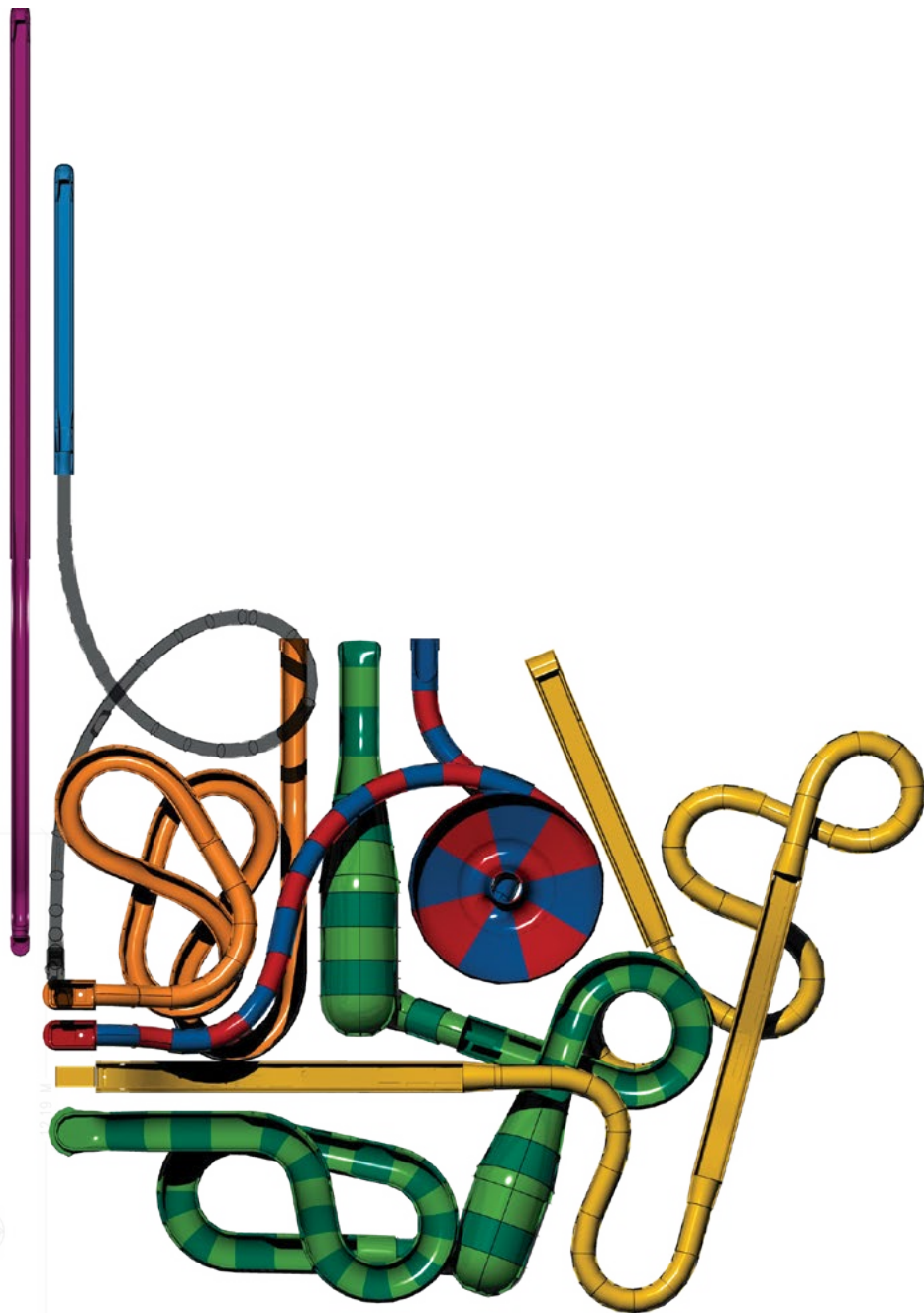
World Waterpark Association
Leading Edge Award 2015

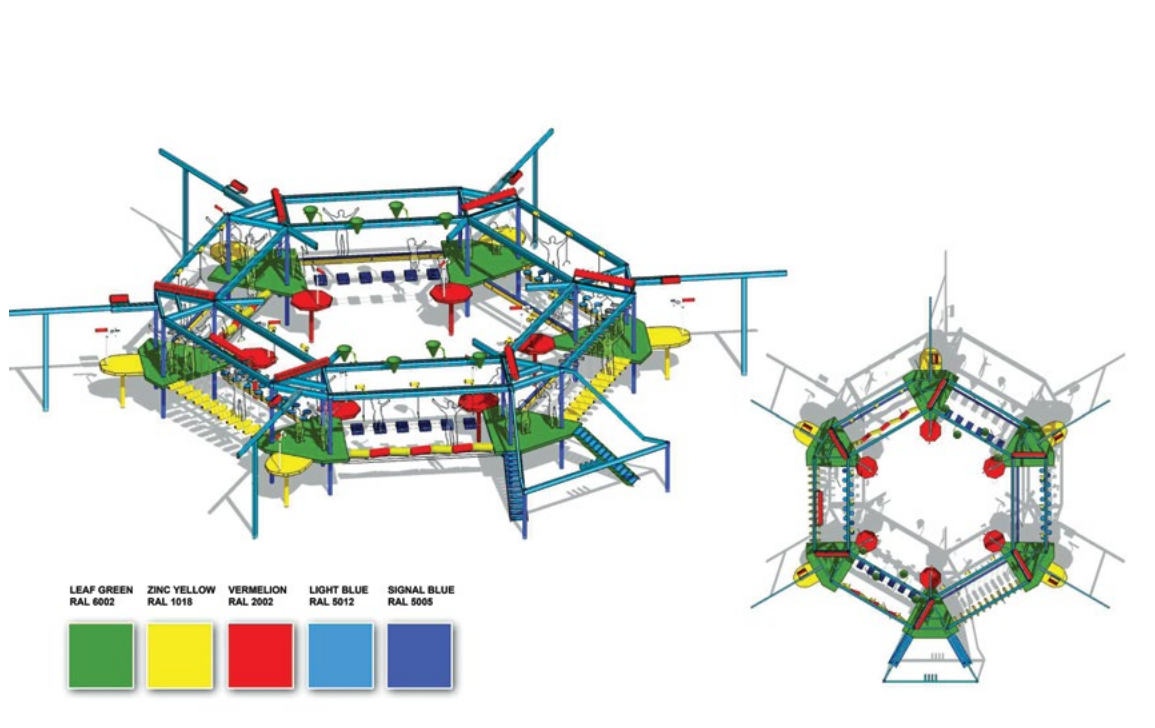


Aquatics International
Dream Design 2015



Tourism Authority of Thailand
Top 10 popular attractions
for Chinese tourists in Thailand







Designers at Work

From high capacity outdoor water parks in China to small municipal aquatic centers in the USA WhiteWater has the design expertise and experience to provide the solution your project needs. We love to be challenged and solve problems from fitting a lot of fun into very small spaces on Cruise ships to integrating amusement facilities into hotels and resorts. Our thinking isn't constrained to water, we also work with theme parks and can integrate 'dry' entertainment elements into your plan.

- Indoor Waterparks
- Outdoor Waterparks
- Indoor & Outdoor Waterpark
- Hybrid parks (containing both wet and dry attractions)



WHITEWATER®

EST. 1980

WhiteWater was born in 1980 with one clear purpose, to create places where families unite and make joyful lasting memories.

We achieve this by standing alongside our customers from concept to completion of award-winning attractions, from slides to water rides and everything in between. We aim to inspire our clients by unleashing our creativity to realize their ambitions; we craft solutions which make each park unique. We are dedicated to making products that operators can count on, because we understand the importance of reliability and efficiency on the bottom line.

As market leaders, we put our success down to our attitude, in all our years we've never once forgotten why we're here – to help parks solve problems, create immersive experiences, and delight guests all over the world.

We're here to create places where fun can thrive.

Head Office (Vancouver)
+1.604.273.1068
whitewater@whitewaterwest.com

www.whitewaterwest.com

Asia Pacific Office (Shanghai)
+86 21 32567586
whitewater@whitewaterwest.cn

www.whitewaterwest.cn

Middle East Office (Dubai)
+971 (0) 4 422 9318

Europe Office (Munich)
+49 89 904 2282 30